

SERVICE INFORMATION

BOOTH EQUIPMENT

Each 10' x 10' booth will be set with 8' high red and gray back drape, 36" high red side dividers, one 6' x 30" gray skirted table, two opal side chairs, one wastebasket, and a 7" x 44" identification sign.

EXHIBIT HALL CARPET

The exhibit area is not carpeted.

ELECTRICAL SERVICE

Electrical service will be provided by Show Management.

DISCOUNT PRICE DEADLINE DATE

In order to receive advance order discount rates listed on the price sheet, we must receive your order and payment by August 3, 2011.

Save money by ordering cleaning services and labor in advance. All cleaning orders as well as display and rigging labor orders placed at show site will be charged an additional 30% above the advance rate.

SHOW SCHEDULE

EXHIBITOR MOVE-IN

For more information and helpful hints on preshow procedures and move-in, please go to www.freemanco.com/preshowFAQ.

Wednesday August 17, 2011 By Appointment Only*

*Contact Courtney Stolte at (210) 491-2126 or courtney@ttha.com to schedule.

Thursday August 18, 2011 8:00 AM - 5:00 PM

Friday August 19, 2011 7:00 AM - 1:00 PM

Please note that you CANNOT drive into the Round-Up Room during set-up/tear-down, and if you plan on driving into the Texas Room, you will not be allowed to do so after 11:00 AM on Friday.

EXHIBIT HOURS

Friday August 19, 2011 3:00 PM - 9:00 PM

Saturday August 20, 2011 9:00 AM - 7:00 PM

Sunday August 21, 2011 10:00 AM - 5:00 PM

EXHIBITOR MOVE-OUT

For more information and helpful hints on postshow procedures and move-out, please go to www.freemanco.com/postshowFAQ

Sunday August 21, 2011 5:00 PM - 11:45 PM

We will begin returning empty containers at the close of the show.

DISMANTLE AND MOVE-OUT INFORMATION

All exhibitor materials must be removed from the exhibit facility by Sunday, August 21 at 11:45 PM.

To ensure all exhibitor materials are removed from the exhibit facility by the Exhibitor Move-Out deadline please have all carriers check-in by Sunday, August 21, at 7:00 PM.

POST SHOW PAPERWORK AND LABELS

Our Exhibitor Services Department will gladly prepare your outbound Material Handling Agreement and labels in advance. Complete the Outbound Shipping form and your paperwork will be available at show site. Be sure your carrier knows the company name and booth number when making arrangements for shipping your exhibit at the close of the show.

SERVICE CONTRACTOR CONTACTS / INFORMATION:

FREEMAN
 8801 Ambassador Row
 Dallas, TX 75247
 (214) 634-1463 fax (469) 621-5601
 email: FreemanDallasES@freemanco.com

FREEMAN EXHIBIT TRANSPORTATION
 (800) 995-3579 fax (469) 621-5810
FREEMAN AUDIO VISUAL SERVICES, INC.
 4545 W. Davis Street
 Dallas, TX 75211
 (214) 623-1300 fax (214) 337-5631

FREEMAN ONLINE®

Our Internet online ordering service, Freeman OnLine® is available for your convenience to order all Freeman services, view show schedule, or print order forms. Once your show is available online, you will receive an email which includes a direct link to Freeman OnLine®.

To place online orders you will be required to enter your unique Login ID and Password. If this is your first time to use Freeman OnLine®, click on the "Login" link in the top right corner to create a new account. To access Freeman OnLine® without using the email link, visit www.myfreemanonline.com and click on the "Login" link in the top right corner. If you need assistance with Freeman OnLine® please call our Customer Support Center at (888) 508-5054.

SHIPPING INFORMATION

Warehouse Shipping Address:

Exhibiting Company Name / Booth # _____
HUNTERS EXTRAVAGANZA
C/O Freeman
5130 Cash Rd
Dallas, TX 75247

Freeman will accept crated, boxed or skidded material beginning July 25, 2011 at the above address. Material arriving after August 15, 2011 will be received at the warehouse with an additional after deadline charge. Warehouse materials are accepted at the warehouse Monday through Friday between the hours of 8:00 AM - 3:30 PM.

Show Site Shipping Address:

Exhibiting Company Name / Booth # _____
HUNTERS EXTRAVAGANZA
C/O Freeman
Will Rogers / Amon Carter
3401 W. Lancaster
Ft Worth, TX 76107

Freeman will receive shipments at the exhibit facility beginning August 17, 2011. Shipments arriving before this date may be refused by the facility. Any charges incurred for early freight accepted by the facility will be the responsibility of the exhibitor.

Please note: All items and materials that must be brought into the facility may be subject to Material Handling Charges and are the responsibility of the Exhibitor. This also applies to items not ordered through the Official Show Vendors.

LABOR INFORMATION

Booth Installation & Dismantle: If utilizing Freeman labor, please refer to the Installation & Dismantle order form to place your order for display labor. Straight time and Overtime hours are also listed on the order form. Exhibitors supervising Freeman labor will need to pick up and release their labor at the Service Desk.

ELECTRICAL SERVICE

Electrical service will be provided by Show Management.

AV / COMPUTER INFORMATION

Audio-visual / computer equipment may be rented by calling the rental department at Freeman AV at (214) 623-1300.

TELEPHONE SERVICE

Please call AT&T Special Events at (888) 890-5200 for temporary telephone service.

ASSISTANCE

We want you to have a successful show. If we can be of assistance, please call our Exhibitor Services Department at (214) 634-1463.

WE APPRECIATE YOUR BUSINESS!

FREEMAN GENERAL INFORMATION

TRANSLATION SERVICE

Freeman is pleased to offer a new service for our international exhibitors that provides quick interpretation and translation in 150 languages. This service will not only interpret for us on a three-way conversation, but also translate emails from customers. To access this service you may contact Freeman Dallas Exhibitor Services at 214-634-1463 or Freeman's Customer Support Center at (888)508-5054.

HELPFUL HINTS

SAVE MONEY

Order early to take advantage of advance order discount rates, place your order by deadline dates.

AVOID DELAY

Ship early to avoid delays. Shipments arriving late at show site will cost you money, time and business!

SAFETY TIPS

Use a ladder, not a chair. Standing on chairs, tables and other rental furniture is unsafe and can cause injury to you or to others. These objects are not designed to support your standing weight.

Be aware of your surroundings. You are in an active work area with changing conditions during move-in and move-out. Pay attention. Look for obstacles, and machinery and equipment that are in use.

Keep your eyes open for scooters and forklifts. The drivers of these vehicles may not be able to see you.

Stay clear of dock areas, trucks and trailers. These areas can be particularly dangerous.

Prevent electrical shocks, falling items and damage to materials. Do not attach items or equipment to the drapes or metal framework provided for your booth. This can cause serious injury or damage to materials.

We discourage children from being in the exhibit hall during installation and dismantle. If children are present during installation and dismantle, they must be supervised by an adult at all times.

Freeman does not ship or handle Hazardous Materials. If any materials you are shipping to the event fall into this category, please contact Freeman to be sure that the material will be allowed at the facility and by the association. In addition, if authorized by the facility and the association, you will need to make separate arrangements for the transport and handling of the approved materials, since Freeman will not transport or handle them.

The operation or use of all motorized lifts and motorized material handling equipment for installation/dismantle of exhibits is NOT permitted by exhibitors or by their exhibitor appointed contractors (EAC's). Thank you for your cooperation

EXHIBITOR ASSISTANCE

For more information and helpful hints on preshow procedures and move-in, please go to www.freemanco.com/preshowFAQ.

For more information and helpful hints on postshow procedures and move-out, please go to www.freemanco.com/postshowFAQ.

Call Freeman's Exhibitor Services department at 214-634-1463 with any questions or needs you may have.

F R E E M A N

8801 Ambassador Row
 Dallas, TX 75247
 (214) 634-1463 Fax: (469) 621-5601
 FreemanDallasES@freemanco.com

DISCOUNT PRICE
 DEADLINE DATE
 AUGUST 03, 2011

INCLUDE THIS FORM
 WITH YOUR ORDER

NAME OF SHOW: **HUNTERS EXTRAVAGANZA / AUGUST 19 - 21, 2011**

COMPANY NAME: _____ BOOTH #: _____

ADDRESS: _____ BOOTH SIZE : _____ X

CITY/STATE/ZIP: _____

PHONE: _____ EXT.: _____ FAX #: _____

SIGNATURE: _____ PRINT NAME: _____

CONTACT'S E-MAIL: _____

E-MAIL FOR INVOICE: _____ **Check if you are a new Freeman customer**

Invoices will be sent by e-mail; please provide e-mail address of the person who reconciles your invoices if different than contact's email.

METHOD OF PAYMENT

BY SUBMITTING THIS FORM OR ORDERING MATERIALS OR SERVICES FROM FREEMAN, YOU AGREE TO BE BOUND BY ALL TERMS & CONDITIONS INCLUDED IN YOUR SERVICE MANUAL.

COMPANY CHECK
 Please make check payable to: Freeman
 Checks must be in U.S. funds drawn on a U.S. or Canadian bank ("U.S. FUNDS" MUST BE PRE-PRINTED on Canadian checks.)
Please reference (246793) on your remittance.

CREDIT CARD
 For your convenience, we will use this authorization to charge your credit card account for your advance orders, and any additional amounts incurred as a result of show site orders placed by your representative. These charges may include all Freeman companies, or any charges which Freeman may be obligated to pay on behalf of Exhibitor, including without limitation, any shipping charges. Please complete the information requested below:

AMERICAN EXPRESS **MASTER CARD** **VISA**

BANK TRANSFER
 Bank transfer to Bank of America, N.A.; Dallas, TX
Wire Transfer
 ABA#: 026009593 ACCT 1252039192 Freeman
International Wire Transfer
 Swift Code: BOFAUS3N ACCT# 1252039192 Freeman
ACH Direct Deposit
 ABA#:111000012 ACCT# 1252039192 Freeman
Please reference Name of Show & Booth Number so we can properly credit your account.
Note: Customers are responsible for any bank processing fees.

ACCOUNT NO.: _____ EXP. DATE: _____

CARDHOLDER NAME (PRINT): _____ SIGNATURE: _____

CARDHOLDER BILLING ADDRESS: _____

CITY/STATE/ZIP: _____

ENTER TOTALS HERE

FURNISHINGS & ACCESSORIES	CARPET	CLEANING/ SHAMPOOING	PORTER SERVICE	RENTAL EXHIBITS & ACCESSORIES	SIGNS	INSTALLATION LABOR	DISMANTLE LABOR
MATERIAL HANDLING	RIGGING INSTALLATION	RIGGING DISMANTLE	EXHIBIT TRANSPORTATION	HANGING SIGNS	GRAND TOTAL		

- Remember to order in advance to save time and money. You may place your order by phone, fax, mail, or use our online ordering service at: www.freemanco.com/store.
- Orders received without payment or after the discount price deadline date will be charged at the standard price.
- Copies of invoices may be picked up from the Service Desk prior to show closing.
- If you have questions or need assistance with any items not listed, please call and ask for your Exhibitor Services Representative.

TELL US WHAT YOU THINK

Freeman is committed to providing great customer service. To help us serve you more effectively in the future, please visit the URL address below upon the completion of your show to provide feedback. Your input will provide the insight needed to ensure that our customer service is in line with your expectations.
<http://feedback.freemanco.com/? 246793>

FREEMAN method of payment

FREEMAN

8801 Ambassador Row
Dallas, TX 75247
(214) 634-1463 Fax: (469) 621-5601
FreemanDallasES@freemanco.com

HUNTERS EXTRAVAGANZA / AUGUST 19 - 21, 2011

In order to authorize Freeman to invoice a third party for payment of services rendered to exhibitors, both the exhibiting company and the third party must complete this form and return it at least 14 days prior to show move-in.

EXHIBITING COMPANY AUTHORIZATION OF THIRD PARTY BILLING

"We understand and agree that we, the exhibiting company, are ultimately responsible for payment of charges and agree by submitting this form or ordering materials or services from Freeman, to be bound by all terms and conditions as described in the Terms & Conditions section of this service manual. In the event that the named third party does not discharge payment of the invoice prior to the last day of the show, charges will revert back to the exhibiting company. All invoices are due and payable upon receipt, by either party. The items checked below are to be invoiced to the third party."

BY SUBMITTING THIS FORM OR ORDERING MATERIALS OR SERVICES FROM FREEMAN, YOU AGREE TO BE BOUND BY ALL TERMS & CONDITIONS INCLUDED IN YOUR SERVICE MANUAL.

EXHIBITOR NAME: (PLEASE PRINT)

EXHIBITOR SIGNATURE:

DATE:

EXHIBITING COMPANY INFORMATION

EXHIBITING COMPANY NAME:

BOOTH #:

EXHIBITING COMPANY ADDRESS:

CITY/STATE/ZIP:

PHONE:

EXT:

FAX:

CONTACT'S E-MAIL:

Indicate which services are to be invoiced to the Third Party:

- | | |
|---|---|
| <input type="checkbox"/> ALL FREEMAN SERVICES | <input type="checkbox"/> FREEMAN EXHIBIT TRANSPORTATION |
| <input type="checkbox"/> I&D LABOR/SUPERVISION | <input type="checkbox"/> RENTAL FURNITURE/CARPET/SIGNS |
| <input type="checkbox"/> MATERIAL HANDLING/IN & OUT | <input type="checkbox"/> BOOTH CLEANING |
| | <input type="checkbox"/> OTHER _____ |

THIRD PARTY COMPANY INFORMATION

THIRD PARTY COMPANY NAME:

CONTACT NAME:

THIRD PARTY BILLING ADDRESS:

CITY/STATE/ZIP:

PHONE:

EXT:

FAX:

CONTACT'S E-MAIL:

E-MAIL FOR INVOICE:

Invoices will be sent by e-mail; please provide the e-mail address of the person who reconciles your invoices if different than contact's e-mail.

THIRD PARTY CREDIT CARD AUTHORIZATION

- AMERICAN EXPRESS MASTERCARD VISA

CREDIT CARD ACCOUNT NO:

EXP. DATE:

CARDHOLDER NAME (PLEASE PRINT):

CARD TYPE:

AUTHORIZED SIGNATURE:

CARDHOLDER BILLING ADDRESS:

CITY/STATE/ZIP:



FURNISHING essentials

When it comes to basic seating needs, look no further than Freeman. Our wide array of well-designed modern chairs, armchairs and stools will serve your show space requirements.

seating

diva series

Natural blonde wood and matte chrome finish highlight this sleek Italian design.

diva counter stool

17"W 16"L 36"H – N71092
The intermediate 25" seating height makes this stool ideal for theater or demo areas.

diva chair

18"W 16"L 31"H – N71091
A natural complement to modern exhibit designs.



santana armchair

24"W 20"L 31"H – N710102
Modern styling with ergonomic shape; as striking as it is comfortable.



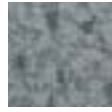
Call customer service at the number listed on Quick Facts.

For fast, easy ordering, go to www.myfreemanonline.com.

Colors may vary when viewing or printing from a computer.

forestdale chair

21"W 21"L 31"H – N71085
 Padded seat and back in distinct geometric fabric with a sturdy lightweight frame.



director stool

17"W 24"L 45"H – N710142

director chair

17"W 24"L 32"H – N71042

custom imprinting

Ask us about custom logo imprinting on the Director Chair or Stool back fabric. – N710998



Royal Blue



Black



Bright Green



Yellow



Orange



Red



Purple



Bright Blue

cherry barrel chair

Cranberry or Taupe
 23"W 22"L 29"H – N71038
 Traditional style in a cherry finish with classic fabric pattern options.



diplomat chair

Black Diamond Fabric
 25"W 28"L 36"H – N710144
 Comfortable, yet compact for office or conference table seating.



gray gaslift stool

24"W 20"L 46"H
With Arms – N71048
No Arms – N71047

gray gaslift chair

26"W 20"L 38"H
With Arms – N71046
No Arms – N71045

Telescoping height
adjustment; five-caster
base rolls with ease.



executive chair

Black Tweed
28"W 25"L 45"H – N71044



Bugle Base Table (page 8)

bugle base chair

Black or Blue Tweed
21"W 20"L 32"H – N71041





black diamond side chair

21"W 23"L 32"H – N71089

black diamond stool

22"W 18"L 46"H – N71088

black diamond armchair

20"W 21"L 33"H – N71090



Soho Bistro Table (page 8)

casey padded stool

Black or Gray Fabric

20"W 21.5"L 42.5"H – C210112

carson armchair

Blue, Black or Gray Fabric

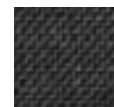
21"W 20"L 33"H – C210101



opal side chair

White

20"W 19"L 30"H – C210105





lounge seating

Give your exhibit a casual yet practical look with Freeman superior lounge seating. Pick from a large selection of sofas, loveseats, chairs and barstools that are sure to take your exhibit design to the next level.



signature loveseat

Black

33"W 60"L 33"H – N73091

Deeply comfortable sofa-style seating in a sleek, contemporary shape.

signature chair

Black

33"W 35"L 33"H – N71093



kennedy sectional series

Blue or Black Tweed

Flexible sofa-style seating in a variety of configurations.

sofa, three-piece

31"W 87"L 28"H – N730313

loveseat, two-piece

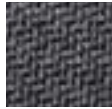
31"W 62"L 28"H – N730213

corner section

31"W 31"L 28"H – N73013

center section

31"W 25"L 28"H – N73014





glass conference table

Black or Chrome Pedestal

42"W 42"L 30"H – N72015

Rounded square glass top is supported by stylish metal frame in a choice of two colors.



cherry cocktail table

19"W 36"L 17"H – N72026

cherry end table

20"W 20"L 20"H – N72027

tables

What Freeman always brings to the table is professionalism, and nothing says more about your meeting space and/or show site than your surfaces and tabletops. Choose from modern glass conference tables, traditional cocktail, end tables and much more.



Milano Table (page 9)

Diplomat Chair (page 2)

Colors may vary when viewing or printing from a computer.

metro series*Black***slate end table**

20"W 20"L 17"H – N72029

slate cocktail table

20"W 40"L 15"H – N72028

**pedestal tables**

A range of tabletop sizes and materials with pedestals in various heights to fit any space.

soho series

Black-Top Mini	18"H x 18"W	N72066
Black-Top Cafe	30"H x 24"W	N72069
Black-Top Bistro	42"H x 24"W	N72070
Black-Top Cafe	30"H x 36"W	N72067
Black-Top Bistro	42"H x 36"W	N72068

chelsea series

Butcher Block-Top Cafe	30"H x 30"W	N72063
	30"H x 36"W	N72064
Butcher Block-Top Bistro	42"H x 30"W	N720163
	42"H x 36"W	N720164

**studio series****black end table**

17"W 17"L 18"H – C115104

black cocktail table

36"W 20"L 15"H – C115103

bugle base table*White*

36"W 27"H – N72065



office furniture

When it's time to set up office, Freeman offers a wide selection of superior, professional pieces in eye-catching shapes and styles to suit any budget and/or design essential. From classic credenzas and bookcases to professional seating, we've got all your office furniture requirements.



Cherry Tables (page 7)
Cherry Barrel Chairs (page 2)
Black Table Lamp (page 14)



milano table

42"W 84"L 29"H

Blonde Top with Black Base – N72093

Black Top with Black Base – N72092

The latest seven-foot conference table by Freeman features clean curved lines and a wealth of work space.



luna table

36"W 72"L 29"H

Black Top with Black Base – N72094

This contemporary six-foot conference table or writing desk comes with a black laminate top.



hemingway writing table

Black

24"W 49"L 29"H – N720191

office series

Cherry or Oak

five-foot desk

30"W 60"L 30"H

Cherry – N74061

Oak – N74071



credenza

16"W 60"L 30"H

Cherry – N74064

Oak – N74074

bookcase

12"W 36"L 72"H

Cherry – N74065

Oak – N74075



display

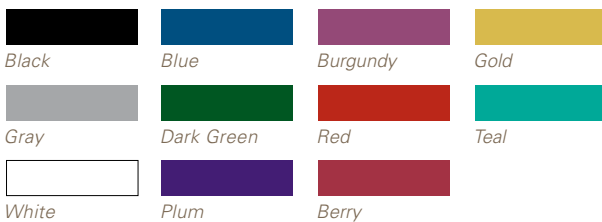
Some of the most essential elements of your exhibit are the surfaces on which you display your show materials. That's why we have an appealing variety of displays, from standing cylinders to sleek computer desks to draped tables and counters, to ensure your show space will be both attractive and interactive.



draped or undraped table counters

Colored draping includes white vinyl top and pleated skirt on three sides. Fourth-side draping is available. Undraped tables include white vinyl tops.

	3'	4'	6'	8'
tables (30" height)				
Draped	C130330	C130430	C130630	C130830
Draped on fourth side			C12404630	C12404830
Undraped	C131330	C131430	C131630	C131830
counters (42" height)				
Draped	C130342	C130442	C130642	C130842
Draped on fourth side			C12404642	C12404842
Undraped	C131342	C131442	C131642	C131842



Tabletop risers are also available in a variety of sizes. See order form for details.



display cubes

Black

12" small

12"W 12"L 42"H – N75030

18" medium

18"W 18"L 36"H – N75031

24" large

24"W 24"L 42"H – N75032



display cylinders

Black

low

30"W 15"H – N75020

medium

18"W 20"H – N75021

high

24"W 36"H – N75022



orion computer kiosk

Black

28"L 28"D 40.5"H – N75079

Pedestal for computer demo with keyboard tray and interior storage. (Computer not included.)



display counter

Black

24"W 49"L 42"H – N72056



accessories

We know that every exhibit is different and requires certain pieces that may be hard to find. That's why we offer an assortment of accessories that will meet your needs, from literature racks to bulletin boards to refrigerators and file cabinets. No matter the requirement, your exhibit will always stand out with these striking and functional pieces.

a. chrome stanchion with 8' retractable belt

42"H – C220121

b. chrome sign holder

Holds 22"x 28" sign – C220118

c. round literature rack

17"W 17"L 57"H – N750135
Revolving black display holds printed materials for easy access from 20 pockets.

d. flat literature rack

10"W 55"H – N750136
Forward-facing black display presents printed materials in six pockets.

e. chrome coat tree

C220109

f. chrome easel

C220134

g. chrome bag rack

C220110

h. contempo trash receptacle

8"W 24"H
Black – N75053
Aluminum – N75054

wastebasket

Wastebasket color may vary.
C220107



Colors may vary when viewing or printing from a computer.



e.



f.



g.



h.

small refrigerator*

19"W 19"L 34"H – N75057



file cabinet with lock

Standard Size

two-drawer

15"W 29"L 28"H – N74082

four-drawer

15"W 29"L 50"H – N74081



table lamp*

Black

25"H – N75052



floor-standing bulletin board

48"W 96"L 78"H – C10201484

*Note: Electrical power must be ordered separately.

For ideas on furniture pairings, go to www.freemanco.com/furniturepairing

Colors may vary when viewing or printing from a computer.

FREEMAN

8801 Ambassador Row
 Dallas, TX 75247
 (214) 634-1463 Fax: (469) 621-5601
 FreemanDallasES@freemanco.com

DISCOUNT PRICE
 DEADLINE DATE
 AUGUST 03, 2011

INCLUDE THE FREEMAN METHOD OF
 PAYMENT FORM WITH YOUR ORDER

NAME OF SHOW: **HUNTERS EXTRAVAGANZA / AUGUST 19 - 21, 2011**

COMPANY NAME: _____ BOOTH #: _____ BOOTH SIZE: **X**

CONTACT NAME : _____ PHONE #: _____

E-MAIL ADDRESS : _____

For Assistance, please call (214) 634-1463 to speak with one of our experts.

For fast, easy ordering, go to www.freemanco.com/store

FURNISHINGS

CHAIRS Pages 1 & 2

Qty	Part #	Description	Discount Price	Standard Price	Total
___	N71092	Diva Counter Stool	162.00	210.60	_____
___	N71091	Diva Chair.....	151.00	196.30	_____
___	N710102	Santana Chair	139.00	180.70	_____
___	N71085	Forestdale Chair	84.00	109.20	_____
___	N710144	Diplomat Chair	195.00	253.50	_____
___	N71038	Cherry Barrel Chair	162.00	210.60	_____

Cranberry Taupe

Director Series

Black Blue Bright Green Orange
 Purple Red Royal Blue Yellow

___	N710142	Director Stool	118.00	153.40	_____
___	N71042	Director Chair	106.00	137.80	_____
___	N710998	Custom Imprinting/Director	Call for Quote		

Pages 3 & 4

___	N71048	Gray Gaslift Stool w/Arms	195.00	253.50	_____
___	N71047	Gray Gaslift Stool	183.00	237.90	_____
___	N71046	Gray Gaslift Chair w/Arms	183.00	237.90	_____
___	N71045	Gray Gaslift Chair	173.00	224.90	_____
___	N71044	Executive Chair	206.00	267.80	_____
___	N71041	Bugle Base Chair	128.00	166.40	_____

Black Tweed Blue Tweed

___	N71088	Black Diamond Stool	106.00	137.80	_____
___	N71089	Black Diamond Side Chair ...	95.00	123.50	_____
___	N71090	Black Diamond Arm Chair....	118.00	153.40	_____
___	C210105	Opal Side Chair	38.00	49.40	_____
___	C210101	Carson Arm Chair	73.00	94.90	_____

Black Blue Gray

___	C210112	Casey Padded Stool	84.00	109.20	_____
-----	---------	--------------------------	-------	--------	-------

Black Gray

LOUNGE SEATING Pages 5 & 6

___	N73091	Signature Loveseat	462.00	600.60	_____
___	N71093	Signature Chair	299.00	388.70	_____

Kennedy Sectional Series

Black Tweed Blue Tweed

___	N730313	Kennedy Sofa - 3 piece	521.00	677.30	_____
___	N730213	Kennedy Loveseat - 2 piece	360.00	468.00	_____
___	N73013	Kennedy Corner Section ...	179.00	232.70	_____
___	N73014	Kennedy Center Section ...	179.00	232.70	_____

TABLES Pages 7 & 8

Qty	Part #	Description	Discount Price	Standard Price	Total
___	N72026	Cherry Cocktail Table	136.00	176.80	_____
___	N72027	Cherry End Table	114.00	148.20	_____
___	N72028	Metro Slate Cocktail Table	121.00	157.30	_____
___	N72029	Metro Slate End Table	91.00	118.30	_____
___	C115103	Studio Black Cocktail Table	91.00	118.30	_____
___	C115104	Studio Black End Table	66.00	85.80	_____
___	N72015	Glass Conference Table	174.00	226.20	_____

Black Chrome

___	N72065	Bugle Base Table/White	190.00	247.00	_____
-----	--------	------------------------------	--------	--------	-------

Pedestal Tables - SoHo Series

___	N72066	Black-top Mini 18"W x 18"H	85.00	110.50	_____
___	N72069	Black-top Cafe 24"W x 30"H ...	139.00	180.70	_____
___	N72070	Black-top Bistro 24"W x 42"H	139.00	180.70	_____
___	N72067	Black-top Café Table 36"x30"	143.00	185.90	_____
___	N72068	Black-top Bistro 36"W x 42"H ..	143.00	185.90	_____

Pedestal Tables - Chelsea Series - Butcher Block Top

___	N72063	Café Table 30"W x 30"H	139.00	180.70	_____
___	N72064	Café Table 36"W x 30"H	139.00	180.70	_____
___	N720163	Bistro Table 30"W x 42"H	139.00	180.70	_____
___	N720164	Bistro Table 36"W x 42"H	139.00	180.70	_____

OFFICE FURNITURE Pages 9 & 10

___	N72093	Milano Table/Blonde Top	310.00	403.00	_____
___	N72092	Milano Table/Black Top	310.00	403.00	_____
___	N72094	Luna Table/Black Top	455.00	591.50	_____
___	N720191	Hemingway Writing Table	271.00	352.30	_____
___	N74061	Cherry Desk 5'	419.00	544.70	_____
___	N74065	Cherry Bookcase	142.00	184.60	_____
___	N74064	Cherry Credenza	322.00	418.60	_____
___	N74071	Oak Desk 5'	418.00	543.40	_____
___	N74075	Oak Bookcase	142.00	184.60	_____
___	N74074	Oak Credenza	321.00	417.30	_____

OFFICE FURNITURE Pages 11 & 12

___	N72056	Display Counter	271.00	352.30	_____
___	N75079	Orion Computer Kiosk	293.00	380.90	_____
___	N75030	Black Display Cube/Small	168.00	218.40	_____
___	N75031	Black Display Cube/Medium ...	182.00	236.60	_____
___	N75032	Black Display/Large	210.00	273.00	_____

NAME OF SHOW: **HUNTERS EXTRAVAGANZA / AUGUST 19 - 21, 2011**

COMPANY NAME: _____ BOOTH#: _____ BOOTH SIZE: **X**

CONTACT NAME : _____ PHONE #: _____

E-MAIL ADDRESS : _____

For Assistance, please call (214) 634-1463 to speak with one of our experts.

For fast, easy ordering, go to www.freemanco.com/store

FURNISHINGS

DISPLAY FURNITURE
Pages 11 & 12 (continued)

Qty	Part #	Description	Discount Price	Standard Price	Total
Display Cylinders					
___	N75020	Black Display Cylinder/Low ...	158.00	205.40	___
___	N75021	Black Display Cylinder/Med	183.00	237.90	___
___	N75022	Black Display Cylinder/Lg	215.00	279.50	___

Draped Tables - Tables are 30" wide
 Black Blue Burgundy Dark Green Gold
 Gray Plum Red Teal White

___	C130330	Draped Table 3'L x 30"H	72.00	93.60	___
___	C130430	Draped Table 4'L x 30"H	81.00	105.30	___
___	C130630	Draped Table 6'L x 30"H	96.00	124.80	___
___	C130830	Draped Table 8'L x 30"H	116.00	150.80	___
___	C12404630	4th Side Drape 6'L x 30"H ..	27.00	35.10	___
___	C12404830	4th Side Drape 8'L x 30"H .	27.00	35.10	___
___	C130342	Draped Counter 3'L x 42"H ...	107.00	139.10	___
___	C130442	Draped Counter 4'L x 42"H ...	116.00	150.80	___
___	C130642	Draped Counter 6'L x 42"H ...	130.00	169.00	___
___	C130842	Draped Counter 8'L x 42"H ...	150.00	195.00	___
___	C12404642	4th Side Drape 6'L x 42"H ..	33.00	42.90	___
___	C12404842	4th Side Drape 8'L x 42"H ..	33.00	42.90	___

Undraped Tables - Tables are 30" wide

___	C131330	Undraped Table 3'L x 30"H .	33.00	42.90	___
___	C131430	Undraped Table 4'L x 30"H .	40.00	52.00	___
___	C131630	Undraped Table 6'L x 30"H.	49.00	63.70	___
___	C131830	Undraped Table 8'L x 30"H .	55.00	71.50	___
___	C131342	Undraped Counter 3'Lx42"H	51.00	66.30	___
___	C131442	Undraped Counter 4'Lx42"H	56.00	72.80	___
___	C131642	Undraped Counter 6'Lx42"H	68.00	88.40	___
___	C131842	Undraped Counter 8'Lx42"H	75.00	97.50	___

Table Top Risers

___	C150410	Single Step Riser 4'L x 7"H	40.00	52.00	___
___	C150610	Single Step Riser 6'L x 7"H	62.00	80.60	___
___	C150810	Single Step Riser 8'L x 7"H	77.00	100.10	___
___	C150414	Single Step Riser 4'L x14"H	40.00	52.00	___
___	C150614	Single Step Riser 6'L x14"H	62.00	80.60	___
___	C150814	Single Step Riser 8'L x14"H	77.00	100.10	___
___	C150420	Double Step Riser 4'L	80.00	104.00	___
___	C150620	Double Step Riser 6'L	118.00	153.40	___
___	C150820	Double Step Riser 8'L	154.00	200.20	___

ACCESSORIES
Pages 13 & 14

Qty	Part #	Description	Discount Price	Standard Price	Total
___	C220121	Chrome Stanchion w/belt	85.00	110.50	___
___	C220118	Chrome Sign Holder	69.00	89.70	___
___	N750135	Round Literature Rack	157.00	204.10	___
___	N750136	Flat Literature Rack	135.00	175.50	___
___	C220109	Chrome Coat Tree	37.00	48.10	___
___	C220134	Chrome Easel	37.00	48.10	___
___	C220110	Chrome Bag Rack	84.00	109.20	___
___	N75053	Black Trash Receptacle	58.00	75.40	___
___	N75054	Aluminum Trash Receptacle .	58.00	75.40	___
___	220107	Wastebasket	16.50	21.45	___
___	220106	Corrugated Wastebasket.....	9.50	12.35	___
___	N75057	Small Refrigerator	326.00	423.80	___
___	N75052	Black Table Lamp	82.00	106.60	___
___	N74082	File Cabinet/2 Drawer	104.00	135.20	___
___	N74081	File Cabinet/4 Drawer	136.00	176.80	___
___	10201484	Bulletin Board	156.00	202.80	___

Special Drape
 Black Blue Burgundy Dark Green Gold
 Gray Plum Red Teal White

___	12103	Special Drape 3'H (per ft.)	14.50	18.85	___
___	12108	Special Drape 8'H (per ft.) ...	17.00	22.10	___

TOTAL COST		
___	+	___ = ___
Sub-Total	8.25% Tax	Total Cost

FREEMAN furnishing essentials

FREEMAN

8801 Ambassador Row
Dallas, TX 75247
(214) 634-1463 • Fax: (469) 621-5601
FreemanDallasES@freemanco.com

DEADLINE DATE
AUGUST 3, 2011

INCLUDE THE FREEMAN METHOD OF
PAYMENT FORM WITH YOUR ORDER

NAME OF SHOW: **HUNTERS EXTRAVAGANZA / AUGUST 19-21, 2011**

COMPANY NAME: _____ BOOTH #: _____

CONTACT NAME: _____ PHONE #: _____

E-MAIL ADDRESS: _____

For Assistance, please call 214-634-1463 to speak with one of our experts.

For fast, easy ordering, go to www.myfreemanonline.com

<p>PERFBOARD - SINGLE SIDED</p>	<p>All Boards Are Gray Fabric & Double Sided BULLETIN BOARD</p>	<p>PERFBOARD HOOKS</p>	<p>WHITE PERFBOARD SHELVES</p>
<p>BLACK GARMENT RACK</p>	<p>GRID ACCESSORIES</p>	<p>2' x 7' GRID PANELS</p>	<p>4 WAY CONNECTORS</p>
<p>WATERFALL GARMENT RACK</p>	<p>CORNER SHOWCASE</p>	<p>STYLE A FULL VISION CASE</p>	<p>STYLE B HALF VISION CASE</p>
		<p>STYLE C JEWELERS CASE</p>	

Qty	Part #	Description	Discount Price	Standard Price	Total
PERFBOARD / BULLETIN BOARD					
*Please circle choice of Perfboard					
		Horizontal		Vertical	
_____	173519	1M x 8'H Perfboard Panel*	229.00	297.70	_____
_____	173524	1/2Mx8'H Perfboard Panel*	118.00	153.40	_____
_____	10201484	Bulletin Board.....	156.00	202.80	_____
_____	10201	2" Straight Hook30	.40	_____
_____	10202	6" Straight Hook90	1.20	_____
_____	10206	1" J Hook.....	.30	.40	_____
_____	10203	Single Hook.....	.30	.40	_____
_____	10204	Double Hook60	.80	_____
_____	17201	1M Straight Shelf 12"x37"	57.00	74.10	_____
_____	17206	1M Angled Shelf 12"x37"	65.00	84.50	_____

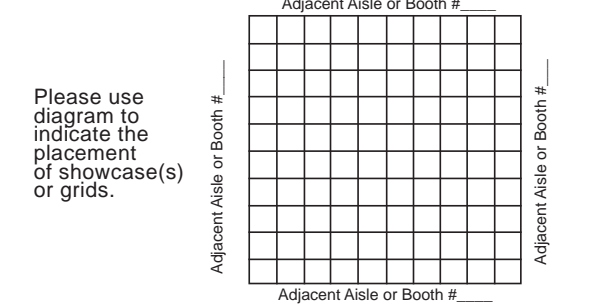
GRIDS - Please use grid to indicate placement

_____	103027	Chrome Grid 2'x7'	81.00	105.30	_____
*please circle one for grids: with bases without bases					
_____	103030	4-Way Grid Connectors.....	2.30	3.00	_____
_____	10309	Cleaver Clip for Grid.....	.76	1.00	_____
_____	10307	7-Ball Waterfall (for grids).....	7.00	9.10	_____
_____	1030468	4" Single Hook (for grids)90	1.20	_____
_____	1030468	6" Single Hook (for grids)	1.00	1.30	_____
_____	1030468	8" Single Hook (for grids)	1.15	1.50	_____

ACCESSORIES

_____	15905	Fish Bowl.....	13.50	17.55	_____
_____	159014	Ticket Tumbler - Small	86.00	111.80	_____
_____	10406	Garment Rack.....	81.00	105.30	_____
_____	10401	Waterfall Garment Rack.....	91.00	118.30	_____

Qty	Part #	Description	Discount Price	Standard Price	Total
SHOWCASES					
_____	101043	Full Vision Case - 4'	315.00	409.50	_____
_____	101061	Full Vision Case - 6'	365.00	474.50	_____
_____	101042	Half Vision Case - 4'	306.00	397.80	_____
_____	101060	Half Vision Case - 6'	339.00	440.70	_____
_____	101041	Jewelers Case - 4'	282.00	366.60	_____
_____	101064	Jewelers Case - 6'	316.00	410.80	_____
_____	1010100	Corner Showcase.....	343.00	445.90	_____
Choose Pad Color: * Please circle color for pads:					
		GRAY	BLACK	BLUE	
_____	10104	Showcase Pad* 4'	67.00	87.10	_____
_____	10106	Showcase Pad* 6'	81.00	105.30	_____
_____	10101	Corner Showcase Pad*	81.00	105.30	_____



TOTAL COST		
Sub-Total _____	+ Tax (8.25%) _____	= TOTAL _____

FREEMAN accessories



carpet

When it comes to making your exhibit stand out on the show floor, we have you covered. Freeman offers superior carpet options designed to fit the requirements of your exhibit space. With classic, custom or prestige carpet available to suit your needs. Freeman has endless carpet options to choose from. Here are some facts about our first-rate carpet services:

- Freeman uses only colorfast carpet, making it a consistent, matching shade every time
- Freeman employees supervise the laying of your carpet
- To ensure quality, we thoroughly inspect each refurbished carpet
- All of our carpet padding has recently been upgraded to above industry standards

Freeman Prestige Carpet combines plush comfort with durable soil and stain resistance, perfect for high-traffic areas. Six popular colors are available in a luxurious 40-ounce weight, and all 15 designer colors are available in a 28-ounce weight. Freeman Prestige Carpet packages include brand-new, 10-foot-wide carpet, delivery, visqueen covering, installation, carpet tape, carpet removal and all carpet material handling fees. Price includes environmentally friendly disposal of carpet after usage. Foam padding is available for a minimal fee. If you have a large order, call to find out about our extra discounts.

prestige CARPET

custom options

Prestige Carpets can also be customized to fit your exhibit needs with unique logos, patterns and borders. Call the phone number on Quick Facts for assistance.



white*



sea breeze*



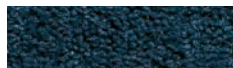
gray pearl*



charcoal*



black*



navy*



wedgewood



toast



cream



baywater



pine



cabernet



raspberry



peach



cardinal

*Colors available in both 28 oz. and 40 oz.

Actual colors may vary slightly.

questions?

Call customer service at the number listed on Quick Facts. For fast, easy ordering, visit us at www.myfreemanonline.com.

classic CARPET

custom cut

Freeman Classic Carpet is available in a range of colors and includes delivery, visqueen covering, installation, carpet tape, carpet removal and all carpet material handling fees. Foam padding is available for a minimal fee. If you have a large order, call to find out about our extra discounts.

standard cut

Our Classic Carpet comes in a variety of sizes: 9' x 10', 9' x 20', 9' x 30', 9' x 40' and larger. Prices include delivery, installation, carpet tape, carpet removal and all carpet material handling fees. Foam padding and visqueen covering are available for a small surcharge. As always, there are no hidden fees.



gray



tuxedo



blue



black



red



plum



green



teal



burgundy

Actual colors may vary slightly.

questions?

Call customer service at the number listed on Quick Facts. For fast, easy ordering, visit us at www.myfreemanonline.com.

F R E E M A N

F R E E M A N

8801 Ambassador Row
 Dallas, TX 75247
 (214) 634-1463 Fax: (469) 621-5601
 FreemanDallasES@freemanco.com

DISCOUNT PRICE
 DEADLINE DATE
 AUGUST 03, 2011

INCLUDE THE FREEMAN METHOD OF
 PAYMENT FORM WITH YOUR ORDER

NAME OF SHOW: **HUNTERS EXTRAVAGANZA / AUGUST 19 - 21, 2011**

COMPANY NAME: _____ BOOTH #: _____ BOOTH SIZE: _____ X

CONTACT NAME : _____ PHONE #: _____

E-MAIL ADDRESS :

For Assistance, please call (214) 634-1463 to speak with one of our experts.

- For FREE samples or a quote on **orders over 1200 sq. ft.** please call our Exhibitor Sales Department at (214) 634-1463.
- **No MATERIAL HANDLING charges apply.** Rental prices are for the duration of the show and include delivery to and removal from your booth space.
- **Orders received after the deadline or without payment will be charged the Standard Price and are subject to availability.** Prestige and Custom Cut Classic Carpet are subject to a 100% Cancellation Charge.

For fast, easy ordering, go to www.freemanco.com/store

PRESTIGE CARPET - includes plastic covering, delivery, material handling, installation and removal

- **Guaranteed new, high quality carpet available in a variety of designer colors.**

CHOOSE YOUR CARPET COLOR - 40 oz. Carpet:

- Black Charcoal Gray Pearl Navy Sea Breeze White

40 oz. Carpet Rental -	Price per sq. ft. (100 sq. ft. minimum)	Discount	Standard	Total
1 - 700 sq. ft.	Booth Size: _____ x _____ = _____ sq. ft. @	\$ 3.20	\$ 4.15	_____
701 - 1200 sq. ft.	Booth Size: _____ x _____ = _____ sq. ft. @	\$ 2.95	\$ 3.85	_____

CHOOSE YOUR CARPET COLOR - 28 oz. Carpet:

- Baywater Cardinal Gray Pearl Pine Toast
 Black Charcoal Navy Raspberry Wedgewood
 Cabernet Cream Peach Sea Breeze White

28 oz. Carpet Rental -	Price per sq. ft. (100 sq. ft. minimum)	Discount	Standard	Total
1 - 700 sq. ft.	Booth Size: _____ x _____ = _____ sq. ft. @	\$ 2.80	\$ 3.65	_____
701 - 1200 sq. ft.	Booth Size: _____ x _____ = _____ sq. ft. @	\$ 2.45	\$ 3.20	_____

CUSTOM CUT CLASSIC CARPET - includes plastic covering, delivery, material handling, installation and removal

- **Our Custom Cut Classic Carpeting is available in custom cut sizes, and in a variety of standard colors.**

CHOOSE YOUR CARPET COLOR:

- Black Blue Burgundy Gray Green Plum Red Teal Tuxedo

Rental - Price per square foot (100 sq. ft. minimum)

16 oz. Carpet Rental	Price per square foot (100 sq. ft. minimum)	Discount	Standard	Total
Per sq. ft.	Booth Size: _____ x _____ = _____ sq. ft. @	\$ 2.30	\$ 3.00	_____

CLASSIC CARPET - includes delivery, material handling, installation and removal

- **Our 16 oz. Classic Carpeting is available in a variety of standard colors in the following standard sizes.**

CHOOSE YOUR CARPET COLOR:

- Black Blue Burgundy Gray Green Plum Red Teal Tuxedo

Qty	Description	Discount	Standard	Total
_____	9' x 10' Classic Carpet	\$ 111.00	\$ 144.30	_____
_____	9' x 20' Classic Carpet	\$ 222.00	\$ 288.60	_____
_____	9' x 30' Classic Carpet	\$ 333.00	\$ 432.90	_____
_____	9' x 40' Classic Carpet	\$ 444.00	\$ 577.20	_____

CARPET PADDING AND PLASTIC COVERING - includes delivery, material handling, installation and removal

- **Price is per sq. ft.**

Qty	Description	Discount	Standard	Total
_____	Carpet Padding - 1/2" (90 - 700 sq. ft.).....	\$.90	\$ 1.15	_____
_____	Carpet Padding - 1/2" (Over 700 sq. ft.).....	\$.70	\$.90	_____
_____	Plastic Covering	\$.70	\$.90	_____

TOTAL COST		
_____	+ _____	= _____
Sub- Total	8.25% Tax	Total Cost

****All utility lines must be installed before carpet installation. Utilities should be ordered in advance.****

F R E E M A N

8801 Ambassador Row
 Dallas, TX 75247
 (214) 634-1463 Fax: (469) 621-5601
 FreemanDallasES@freemanco.com

INCLUDE THE FREEMAN METHOD OF PAYMENT FORM WITH YOUR ORDER

NAME OF SHOW: **HUNTERS EXTRAVAGANZA / AUGUST 19 - 21, 2011**

COMPANY NAME: _____ BOOTH #: _____ BOOTH SIZE: _____ X

CONTACT NAME : _____ PHONE #: _____

E-MAIL ADDRESS : _____

For Assistance, please call (214) 634-1463 to speak with one of our experts.

For fast, easy ordering, go to www.freemanco.com/store

CLEANING SERVICES

- Prices are based on total square footage of booth regardless of area to be cleaned.
- 100 sq. ft. minimum.
- Our exclusive cleaning contract for this show will not permit other service contractors, including exhibitor appointed contractors to provide this service.
- **Show Site Prices will apply to all cleaning orders placed at show site.**

VACUUMING (per sq. ft. - 100 sq. ft. minimum)

Qty (sq. ft.)	Part #	Description	Advance Price	Show Site Price	Total
_____	610100	Booth Vacuuming - One Time40	.50	_____
_____	610200	Booth Vacuuming - 2 Days70	.90	_____
_____	610300	Booth Vacuuming - 3 Days	1.05	1.35	_____
_____	610400	Booth Vacuuming - 4 Days	N/A	N/A	_____

• Includes emptying of your booth's wastebasket(s) at the time of vacuuming.

SHAMPOOING (per sq ft - 100 sq ft minimum)

Qty (sq. ft.)	Part #	Description	Advance Price	Show Site Price	Total
_____	630100	Shampoo Carpet - One Time74	.95	_____
_____	630200	Shampoo Carpet - 2 Days	N/A	N/A	_____
_____	630300	Shampoo Carpet - 3 Days	N/A	N/A	_____

PORTER SERVICE (per day)

Qty (# days)	Part #	Description	Advance Price	Show Site Price	Total
_____	620500	Exhibit Area / Under 500 sq.ft.	102.30	133.00	_____
_____	6201500	Exhibit Area / 501 - 1,500 sq. ft.	111.35	144.75	_____
_____	6202500	Exhibit Area / 1,501 - 2,500 sq. ft.	146.55	190.50	_____
_____	6203500	Exhibit Area / Over 2,500 sq.ft.....	Call for Quote		

TOTAL COST

_____	+	_____	=	_____
Sub-Total		8.25 %Tax		Total Cost

FREEMAN cleaning

UNION JURISDICTIONS FOR THE DALLAS / FT. WORTH AREA

THE FOLLOWING GUIDELINES APPLY IN THE DALLAS / FT. WORTH AREA:

We are certain you will appreciate knowing in advance that union labor may be required for certain aspects of your exhibit handling. To help you understand the jurisdiction that the various unions have, we ask that you read the following:

ELECTRICAL LABOR & PLUMBING

Responsible for assembly, installation, and dismantling of anything that uses electricity as a source of power to the building electrical system. This includes:

- Electrical wiring
- Electrical signs
- Multiple TV and VCR connections
- Videotaping using multiple video cameras, including camera operation, audio and lighting

Responsible for all plumbing supplies. This includes:

- Air
- Water
- Gas lines
- Tanks and venting

TEAMSTER LABOR - TEAMSTER UNION LOCAL 745

The Teamsters Union Local 745 has jurisdiction for the operation of all material-handling equipment, all unloading and reloading, and the handling of empty containers.

Exhibitors may unload their own vehicles provided they do not use any material handling equipment (fork-lifts, flatbeds, dollies, pallet jacks, etc.)

INSTALLATION & DISMANTLE LABOR - DECORATORS UNION LOCAL 756

The Decorators Union Local 756 has jurisdiction for the installation and dismantling of all exhibits including carpet, furniture, and hanging signs. All hired labor must belong to Local 756. Labor can be ordered in advance by returning the enclosed form, or on showsite, at the Freeman Service Desk.

Three options for installation and dismantle labor exist in Dallas. Labor may be:

- performed by full-time employees of the exhibiting company; or
- hired through Freeman, the official general service contractor; or
- hired through an exhibitor-appointed contractor.

PLEASE NOTE:

- Please do not tip any employee. Do not give coffee breaks, for union employees have a fifteen minute paid break mid-morning and mid-afternoon. Any attempt by an employee to solicit a gratuity for any service should be reported immediately to Freeman and/or Exhibit Management. Union employees are paid a good wage scale, and tipping is strongly discouraged and is not an accepted policy of any Official Service Supplier.
- If you encounter any difficulty with any laborer, or if you are not satisfied with the work performed, please bring this to the attention of Freeman. Please refrain from voicing complaints directly to craft personnel.
- The person in charge of your exhibit should carefully inspect and sign all work order forms. If there are any questions about any bills, bring the bill to the appropriate Service Desk and discuss it with the person in charge.

FREEMAN

8801 Ambassador Row
 Dallas, TX 75247
 (214) 634-1463 • Fax: (469) 621-5601
 FreemanDallasES@freemanco.com

INCLUDE THE FREEMAN METHOD OF PAYMENT FORM WITH YOUR ORDER

NAME OF SHOW: **HUNTERS EXTRAVAGANZA / AUGUST 19-21, 2011**

COMPANY NAME _____ BOOTH #: _____

CONTACT NAME: _____ PHONE #: _____

E-MAIL ADDRESS _____

For Assistance, please call 214-634-1463 to speak with one of our experts.

For fast, easy ordering, go to www.myfreemanonline.com

DISPLAY LABOR (One Hour Minimum per Worker)

Description	Advance Price	Show Site Price
Straight Time- 8:00 A.M. to 4:30 P.M. Monday through Friday	\$ 73.50	\$ 95.55
Overtime- 6:00 A.M. to 8:00 A.M. and 4:30 P.M. to 12:00 Midnight Monday through Friday		
6:00 A.M. to 12:00 Midnight Saturday and Sunday	\$ 110.25	\$ 143.35
Double Time- 12:00 Midnight to 6:00 A.M. and recognized holidays.....	\$ 147.00	\$ 191.10

- Show Site prices will apply to all labor orders placed at show site.
- Price is per person/per hour.
- Start time guaranteed only at start of working day.
- One hour minimum per person - labor thereafter is charged in half (1/2) hour increments.
- Labor must be canceled in writing, 24 hours in advance to avoid a one (1) hour cancellation fee per worker.
- When scheduling dismantle labor, be sure to allow sufficient time for empty containers to be returned to your booth.
- Freeman supervised jobs will be completed at our discretion prior to show opening and before the hall must be cleared. **Please include setup plan/photo, special instructions & inbound shipping information with this order.**

INSTALLATION LABOR

Freeman Supervised Labor - Please complete the reverse side of this form.

- Installation of your exhibit will be completed at our discretion prior to show opening.
- The charge for this service is 30% of the total installation labor bill, with a minimum of \$45.00.

Emergency contact: _____ Phone Number: _____

Exhibitor Supervised Labor (Supervisor must check in at Service Desk to pick up labor)

Supervisor will be: _____ Phone Number: _____

Date	Start Time	No. of People	Approx. Hrs. per Person	Total Hrs.	Hourly Rate	Estimated Total Cost
_____	_____	_____ x _____	_____ = _____	_____ @ \$ _____	= \$ _____	
_____	_____	_____ x _____	_____ = _____	_____ @ \$ _____	= \$ _____	
_____	_____	_____ x _____	_____ = _____	_____ @ \$ _____	= \$ _____	
Freeman Supervision (30%/\$45.00)						= \$ _____
Tax						= \$ (N/A)
Total Installation						= \$ _____

DISMANTLE LABOR

Freeman Supervised Labor - Please complete the reverse side of this form.

- Freeman is not responsible for product or literature that is not properly packed and labeled by exhibitor.
- The charge for this service is 30% of the total dismantle labor bill, with a minimum of \$45.00.

Emergency contact: _____ Phone Number: _____

Exhibitor Supervised Labor (Supervisor must check in at Service Desk to pick up labor)

Supervisor will be: _____ Phone Number: _____

Date	Start Time	No. of People	Approx. Hrs. per Person	Total Hrs.	Hourly Rate	Estimated Total Cost
_____	_____	_____ x _____	_____ = _____	_____ @ \$ _____	= \$ _____	
_____	_____	_____ x _____	_____ = _____	_____ @ \$ _____	= \$ _____	
_____	_____	_____ x _____	_____ = _____	_____ @ \$ _____	= \$ _____	
Freeman Supervision (30%/\$45.00)						= \$ _____
Tax						= \$ (N/A)
Total Dismantle						= \$ _____

FREEMAN installation & dismantle

NAME OF SHOW: **HUNTERS EXTRAVAGANZA / AUGUST 19-21, 2011**

COMPANY NAME: _____

BOOTH#: _____

CONTACT NAME: _____

PHONE#: _____

FREEMAN SUPERVISED LABOR

IN ORDER TO BETTER SERVE YOU - PLEASE COMPLETE THE FOLLOWING INFORMATION IF YOUR DISPLAY IS TO BE SET-UP AND/OR DISMANTLED BY FREEMAN I&D AND YOU WILL NOT BE PRESENT TO SUPERVISE THE INSTALLATION AND/OR DISMANTLE.

INBOUND SHIPPING & SET UP INFORMATION

Freight will be shipped to Warehouse _____ Show Site _____ Date Shipped _____

Total No. of: _____ Crates _____ Cartons _____ Fiber Cases _____

Setup Plan/Photo: Attached _____ To Be Sent With Exhibit _____ In Crate No. _____

Carpet: With Exhibit _____ Rented From Freeman _____ Color _____ Size _____

Electrical Placement: _____ Drawing Attached Drawing With Exhibit Electrical Under Carpet _____

Comments: _____

Graphics: With Exhibit _____ Shipped Separately _____

Comments: _____

Special Tools/Hardware Required: _____

OUTBOUND SHIPPING INFORMATION

SHIP TO: _____

METHOD OF SHIPMENT

Freeman Exhibit Transportation:

- Common Carrier
- Air Freight Next Day 2nd Day Deferred Expedited

Other (list carrier name & phone number):

- Other Common Carrier: _____
- Other Air Freight: _____
- Van Line: _____

FREIGHT CHARGES

- Prepaid Collect

Bill To: _____

In the event your selected carrier fails to show on final move-out day, please select one of the following options:

- Reroute via Freeman's choice
- Deliver back to Freeman warehouse at Exhibitor's expense.

PLEASE NOTE: Freeman is not responsible for product or literature that is not properly packed and labeled by exhibitor.

Freeman installation & dismantle

F R E E M A N

1-800-995-3579

COMPLETE THIS FORM ONLY IF YOU ARE SHIPPING YOUR EXHIBIT MATERIALS BY FREEMAN EXHIBIT TRANSPORTATION

INCLUDE THE FREEMAN METHOD OF PAYMENT FORM WITH YOUR ORDER

NAME OF SHOW: **HUNTERS EXTRAVAGANZA / AUGUST 19 - 21, 2011**

COMPANY NAME: _____ BOOTH #: _____ BOOTH SIZE: _____ X

CONTACT NAME : _____ PHONE #: _____

E-MAIL ADDRESS : _____

For Assistance, please call 1-800-995-3579 to speak with one of our experts.

For fast, easy ordering, go to www.freemanco.com/store

EXHIBIT TRANSPORTATION

TIPS FOR EASY ORDERING

- Credit card information must be on file prior to pick up, as charges will be included on your show services invoice.
- International Exhibitors remember - Shipments originating from countries other than the U.S. must be cleared through customs. Please call for additional information: 1-800-995-3579

COMPLETE THE FOLLOWING ITEMS ON THIS FORM:

PICK UP INFORMATION

Requested Pick Up Date: _____

SHIPPER NAME _____

SHIPPER ADDRESS _____

(City) (State) (Zip)

DESTINATION

- I will be shipping to the **WAREHOUSE**

FREEMAN / Exhibiting Company Name / Booth #

HUNTERS EXTRAVAGANZA

C/O: FREEMAN
5130 CASH RD
DALLAS, TX 75247

MUST BE DELIVERED BY AUGUST 15, 2011

- I will be shipping to **SHOW SITE**

FREEMAN / Exhibiting Company Name / Booth #

HUNTERS EXTRAVAGANZA

C/O: FREEMAN
WILL ROGERS MEMORIAL CENTER
3401 WEST LANCASTER AVE
FORT WORTH, TX 76107

CANNOT BE DELIVERED BEFORE AUGUST 17, 2011

TYPE OF SERVICE

- 1 Day: Delivery next business day (before 5:00 PM)
- 2 Day: Delivery by 5:00 PM second business day
- Deferred: Delivery within 3 - 4 business days
- Declared Value \$ _____

Air Transportation charges are billed by Dimensional or Actual Weight, whichever is greater.

- Standard Ground: Dependent on distance
- Expedited Ground: Tailored to specific requirements
- Specialized: Pad wrapped, uncrated, truck load

02/11

SHIPPING INFORMATION

Items to be shipped

Number of Pieces	Est. Weight
___ Crates (wooden)	_____
___ Cartons (cardboard)	_____
___ Cases/Trunks (fiber) (color _____)	_____
___ Skids/Pallets	_____
___ Carpet (color _____)	_____
___ Other (_____)	_____
___ Total	_____

Size of largest piece: (H) _____ (W) _____ (L) _____

NOTE: Shipments will be weighed and measured prior to delivery.

OUTBOUND SHIPPING

- I would like to schedule outbound Freeman Exhibit Transportation. Please provide me with a Material Handling Agreement at show site for my shipping instructions and signature. So we may print your Outbound Material Handling Agreement and labels, please complete the following information **if different from pick up address:**

Ship to address:

Number of Labels : _____

FAX THIS COMPLETED FORM TO:
(469) 621-5810

A TRANSPORTATION SPECIALIST
WILL CALL YOU TO CONFIRM
RECEIPT OF ORDER AND
FINALIZE DETAILS.

SHOW # (246793) _____

FREEMAN exhibit transportation

WHAT ARE FREIGHT SERVICES?

As the official service contractor, Freeman is the exclusive provider of freight services. Material handling includes unloading your exhibit material, storing up to 30 days in advance at the warehouse address, delivering to the booth, the handling of empty containers to and from storage, and removing of material from the booth for reloading onto outbound carriers. It should not be confused with the cost to transport your exhibit material to and from the convention or event. You have two options for shipping your advance freight — either to the warehouse or directly to show site.

How do I ship to the warehouse?

- We will accept freight beginning 30 days prior to show move-in.
- To check on your freight arrival, call Exhibitor Services at the location listed on Quick Facts.
- To ensure timely arrival of your materials at show site, freight should arrive by the deadline date listed on Quick Facts. Your freight will still be received after the deadline date, but additional charges will be incurred.
- The warehouse will receive shipments Monday through Friday, except holidays. Refer to Quick Facts for warehouse hours. No appointment is necessary.
- The warehouse will accept crates, cartons, skids, trunks/cases and carpets. Loose or pad-wrapped material must be sent directly to show site.
- All shipments must have a bill of lading or delivery slip indicating the number of pieces, type of merchandise and weight.
- Certified weight tickets must accompany all shipments.
- Warehouse freight will be delivered to the booth prior to exhibitor setup.
- Please call the number located on Quick Facts if you want to ship oversized material that requires special equipment to the warehouse.

How do I ship to show site?

- Freight will be accepted only during exhibitor move-in. Please refer to Quick Facts for the specific exhibitor move-in dates and times.
- All shipments must have a bill of lading or delivery slip indicating the number of pieces, type of merchandise and weight.
- Certified weight tickets must accompany all shipments.

What about prepaid or collect shipping charges?

- Collect shipments will be returned to the delivery carrier.
- To ensure that your freight does not arrive collect, mark your bill of lading "prepaid."
- "Prepaid" designates that the transportation charges will be paid by the exhibitor or a third party.

How should I label my freight?

- The label should contain the exhibiting company name, the booth number and the name of the event.
- The specific shipping address for either the warehouse or show site is located on Quick Facts.

How do I estimate my Material Handling charges?

- Charges will be based on the weight of your shipment. Each shipment received is considered separately. The shipment weight will be rounded to the next 100 pounds. Each 100 pounds is considered one "cwt." (one hundred weight). All shipments are subject to reweigh.
- On the Order Form, select whether the freight will arrive at the warehouse or be sent directly to show site.
- Next, select the category that best describes your shipment. There are three categories of freight:

Crated: material that is skidded or is in any type of shipping container that can be unloaded at the dock with no additional handling required.

Special Handling: material delivered by the carrier in such a manner that it requires additional handling, such as ground unloading, stacked and constricted space unloading, designated piece unloading, loads mixed with pad-wrapped material, loads failing to maintain shipping integrity, carpet and/or pad-only shipments, and shipments that require additional time, equipment or labor to unload. Federal Express and UPS are included in this category due to their delivery procedures.

Uncrated: material that is shipped loose or pad-wrapped, and/or unskidded machinery without proper lifting bars or hooks.

- Add overtime charges for inbound if material is delivered to the booth during the overtime period stated on Quick Facts. This includes both warehouse and show-site shipments.

- Add overtime charges for outbound if material is loaded onto the outbound carrier during the overtime period stated on Quick Facts.
- Add the late delivery charge listed on the Order Form if the shipment is accepted at the warehouse or at show site after the deadline date listed on Quick Facts.
- The above services, whether used completely or in part, are offered as a package and the charges will be based on the total inbound weight of the shipment.
- Shipments received without receipts or freight bills, such as UPS and Federal Express, will be delivered to the booth without guarantee of piece count or condition.

What happens to my empty containers during the show?

- Pick up "Empty Labels" at the Service Center. Place a label on each container. Labeled containers will be picked up periodically and stored in non-accessible storage during the show.
- At the close of the show, the empty containers will be returned to the booth in random order. Depending on the size of the show, this process may take several hours.

How do I protect my materials after they are delivered to the show or before they are picked up after the show?

- Consistent with trade show industry practices, there may be a lapse of time between the delivery of your shipment(s) to your booth and your arrival. The same is true for the outbound phase of the show — the time between your departure and the actual pick-up of your materials. During these times, your materials will be left unattended. We recommend that you arrange for a representative to stay with your materials or that you hire security services to safeguard your materials.

How do I ship my materials after the close of the show?

- Each shipment must have a completed Material Handling Agreement in order to ship materials from the show. All pieces must be labeled individually.
- To save time, complete and submit the Outbound Shipping Form in advance, or you may contact the Service Center at show site for your shipping documents. The Material Handling Agreement and labels will be processed and available prior to show closing.
- After materials are packed, labeled, and ready to be shipped, the completed Material Handling Agreement must be turned in at the Service Center.
- Call your designated carrier with pick-up information. Please refer to Quick Facts for specific dates and times. In the event your selected carrier fails to show on final move-out day, your shipment will either be rerouted to Freeman's carrier choice or delivered back to the warehouse at exhibitor's expense.
- For your convenience, show-recommended carriers will be on site to handle outbound transportation.

Where do I get a forklift?

- Forklift orders to install or dismantle your booth after materials are delivered may be ordered in advance or at show site. We recommend that you order in advance to avoid additional charges at show site. Refer to the Order Form for available equipment.
- Advance and show-site orders for equipment and labor will be dispatched once a company representative signs the labor order at the Service Center.
- Start time is guaranteed only when equipment is requested for the start of the working day.

Do I need insurance?

- Be sure your materials are insured from the time they leave your firm until they are returned after the show. It is suggested that exhibitors arrange all-risk coverage. This can be done by riders to your existing policies.
- All materials handled by Freeman are subject to the enclosed Terms and Conditions.

Other available services (may not be available in all locations)

- Cranes
- Scissor lifts, condors
- Access storage at show site
- Exhibit transportation services (see enclosed brochure)
- Security storage at show site
- Short-term and long-term warehouse storage
- Local pick-up and delivery
- Priority empty return

SPECIAL HANDLING DEFINITIONS

for frequently asked questions and material handling estimator tools, go to www.myfreemanonline.com

Special handling applies to shipments that are loaded by cubic space and/or packed in such a manner as to require additional labor/handling, such as ground unloading, constricted space unloading, designated piece unloading, carpet/pad only shipments or stacked shipments. Also included are shipment integrity, alternate delivery locations, mixed shipments, and shipments without individual bills of lading. Shipments loaded in this manner require additional time, labor, or equipment, to unload, sort and deliver.

What is Ground Loading/Unloading?

Vehicles that are not dock height, preventing the use of loading docks, such as U-hauls, flat bed trailers, double drop trailers, company vehicles with trailers that are not dock level, etc.

What is Constricted Space Loading/Unloading?

Trailer loaded "high and tight" shipments that are not easily accessible. Freight is loaded to full capacity of trailer – top to bottom, side to side. One example of this is freight that is loaded down one side of a trailer that must be bypassed to reach targeted freight.

What is Designated Piece Loading/Unloading?

Drivers that require the loading crew to bring multiple pieces of the freight to the rear of the trailer to select the next piece, having to remove freight from the trailer then reload to fit or the trailer must be loaded in a sequence to ensure all items fit.

What are Stacked Shipments?

Shipments loaded in such a manner requiring multiple items to be removed to ground level for delivery to booth. Stacked or "cubed out" shipments, loose items placed on top of crates and/or pallets constitute special handling.

What is Shipment Integrity?

Shipment integrity involves shipments on a carrier that are intermingled, or delivered in such a manner that additional labor is needed to sort through and separate the various shipments on a truck for delivery to our customers.

What is Alternate Delivery Location?

Alternative delivery location refers to shipments that are delivered by a carrier that requires us to deliver some shipments to different levels in the same building, or to other buildings in the same facility.

What are Mixed Shipments?

Mixed shipments are defined as shipments of mixed crated and uncrated goods, where the percentage of uncrated is minimal and does not warrant the full uncrated rate for the shipment, but does require special handling. Freeman defines special handling for mixed loads as having less than 50% of the volume as uncrated.

What does it mean if I have "No Documentation"?

Shipments arrive from a small package carrier (including, among others, Federal Express, UPS, Airborne Express &DHL) without an individual Bill of Lading, requiring additional time, labor and equipment to process.

What about carpet only shipments?

Shipments that consist of carpet and/or carpet padding only require special handling because of additional labor and equipment to unload.

What is the difference between Crated and Uncrated Shipments?

Crated shipments are those that are packed in any type of shipping container that can be unloaded at the dock with no additional handling required. Such containers include crates, fiber cases, cartons, and properly packed skids. An uncrated shipment is material that is shipped loose or pad-wrapped, and/or unskidded without proper lifting bars and hooks.

F R E E M A N

F R E E M A N

R U S H

R U S H

DO NOT DELAY

DO NOT DELAY

MUST DELIVER BY AUGUST 15, 2011

MUST DELIVER BY AUGUST 15, 2011

TO: _____
EXHIBITOR NAME

TO: _____
EXHIBITOR NAME

C/O: FREEMAN
5130 CASH RD

DALLAS, TX 75247

C/O: FREEMAN
5130 CASH RD

DALLAS, TX 75247

WAREHOUSE

WAREHOUSE

EVENT: HUNTERS EXTRAVAGANZA

EVENT: HUNTERS EXTRAVAGANZA

BOOTH NO: _____ NO. _____ OF _____ PCS

BOOTH NO: _____ NO. _____ OF _____ PCS

THE ABOVE LABELS ARE PROVIDED FOR YOUR CONVENIENCE.
PLACE ONE ON EACH PIECE SHIPPED TO ENSURE PROPER DELIVERY.
IF MORE LABELS ARE NEEDED, COPIES ARE ACCEPTABLE.

F R E E M A N

F R E E M A N

R U S H

R U S H

DO NOT DELAY

DO NOT DELAY

CANNOT DELIVER BEFORE AUGUST 17, 2011

CANNOT DELIVER BEFORE AUGUST 17, 2011

TO: _____
EXHIBITOR NAME

TO: _____
EXHIBITOR NAME

C/O: FREEMAN
WILL ROGERS MEMORIAL CENTER
3401 WEST LANCASTER AVE

FORT WORTH, TX 76107

C/O: FREEMAN
WILL ROGERS MEMORIAL CENTER
3401 WEST LANCASTER AVE

FORT WORTH, TX 76107

SHOW SITE

SHOW SITE

EVENT: HUNTERS EXTRAVAGANZA

EVENT: HUNTERS EXTRAVAGANZA

BOOTH NO: _____ NO. _____ OF _____ PCS

BOOTH NO: _____ NO. _____ OF _____ PCS

THE ABOVE LABELS ARE PROVIDED FOR YOUR CONVENIENCE.
PLACE ONE ON EACH PIECE SHIPPED TO ENSURE PROPER DELIVERY.
IF MORE LABELS ARE NEEDED, COPIES ARE ACCEPTABLE.

F R E E M A N

8801 Ambassador Row
Dallas, TX 75247
(214) 634-1463 Fax: (469) 621-5601
FreemanDallasES@freemanco.com

OUTBOUND MATERIAL HANDLING
AND SHIPPING LABELS

NAME OF SHOW: **HUNTERS EXTRAVAGANZA / AUGUST 19 - 21, 2011**

COMPANY NAME: _____ BOOTH #: _____ BOOTH SIZE: _____ X

CONTACT NAME : _____ PHONE #: _____

E-MAIL ADDRESS : _____

For Assistance, please call (214) 634-1463 to speak with one of our experts.

For fast, easy ordering, go to www.freemanco.com/store

EVERY OUTBOUND SHIPMENT WILL REQUIRE A MATERIAL HANDLING AGREEMENT AND LABELS. WE WOULD BE HAPPY TO PREPARE THESE FOR YOU IN ADVANCE AND WILL DELIVER THEM TO YOUR BOOTH AT SHOW SITE TO REVIEW AND SIGN. TO TAKE ADVANTAGE OF THIS SERVICE, PLEASE COMPLETE AND RETURN THIS FORM.

SHIPPING INFORMATION

FROM: SHIPPER/EXHIBITOR NAME: _____

BILLING ADDRESS: _____

CITY: _____ STATE/ PROVINCE: _____ ZIP/ POSTAL CODE: _____

SHIP TO: COMPANY NAME: _____

DELIVERY ADDRESS: _____

CITY: _____ STATE/ PROVINCE: _____ ZIP/ POSTAL CODE: _____

PHONE#: _____ ATTN: _____

SPECIAL INSTRUCTIONS: _____

METHOD OF SHIPMENT

PLEASE CHECK DESIRED METHOD OF SHIPMENT BELOW

FREEMAN EXHIBIT TRANSPORTATION

- 1 Day: Delivery next business day
- 2 Day: Delivery by 5:00 P.M. second business day
- Expedited
- Deferred: Delivery within 3-4 business days
- Standard Ground
- Specialized: Pad wrapped, uncrated, or truckload
- OTHER COMMON CARRIER _____
- OTHER VAN LINE _____
- OTHER AIR FREIGHT _____
 - Next Day
 - 2nd Day
 - Deferred

CARRIER PHONE #: _____

Once your shipment is packed and ready to be picked up, please return the Material Handling Agreement to the Exhibitor Services Center.

Verify the piece count, weight and that a signature is on the Material Handling Agreement prior to shipping out.

SHIPMENTS WITHOUT PAPERWORK TURNED IN WILL BE RETURNED TO OUR WAREHOUSE AT EXHIBITOR'S EXPENSE.

Freeman will make arrangements for all Freeman Exhibit Transportation shipments. Arrangements for pick-up by other carriers is the responsibility of the exhibitor. During exhibitor move-out, when time permits, Freeman will attempt a courtesy phone call to your carrier to confirm the scheduled pick-up.

DESIRED NUMBER OF LABELS: _____

PAYMENT & LABOR

YOU ARE ENTERING A CONTRACT WHICH LIMITS YOUR POSSIBLE RECOVERY IN CASE OF LOSS OR DAMAGE. The terms and conditions set forth below become a part of the Contract between FREEMAN and you, the EXHIBITOR. Acceptance of said terms and conditions will be construed when any of the following conditions are met:

- THE METHOD OF PAYMENT FORM IS SIGNED; OR
- AN ORDER FOR LABOR, SERVICES AND/OR RENTAL EQUIPMENT IS PLACED BY EXHIBITOR WITH FREEMAN; OR
- WORK IS PERFORMED ON BEHALF OF EXHIBITOR BY LABOR SECURED THROUGH FREEMAN.

DEFINITIONS

For purposes of this Contract, "FREEMAN" or "The Freeman Companies" means Freeman Decorating Services, Inc., Freeman Decorating Ltd., Freeman Exhibit, AVW-TELAV Inc., Freeman Transportation, Hoffend Xposition, Stage Rigging, Inc., Kerry Technical Services, TFC, Inc., Freeman Electrical Services, and their respective employees, directors, officers, agents, assigns, affiliated companies, and related entities including, but not limited, to any subcontractors FREEMAN may appoint. The term "EXHIBITOR" means the Exhibitor, its employees, agents, representatives, and any Exhibitor Appointed Contractors ("EAC").

PAYMENT TERMS

Full payment, including any applicable tax, is due in advance or at show site. All payments must be in U.S. funds and all checks must be drawn on a U.S. bank. Orders received without advance payment or after the deadline date will incur additional After Deadline charges as indicated on each order form. All materials and equipment are on a rental basis for the duration of the show or event and remain the property of FREEMAN except where specifically identified as a sale. All rentals include delivery, installation, and removal from EXHIBITOR'S booth. In case of cancellation of any orders or services by EXHIBITOR, a one-hour "per person, per hour" charge will be applied for all labor orders that are not canceled in writing at least 24 hours prior to the scheduled start time. If Prestige Carpet, Custom-Cut Carpet, Modular Rental Exhibits and any other custom-order items or services have already been provided at the time of cancellation, fees will remain at 100% of the original charge. If the Show or Event is canceled because of reasons beyond FREEMAN'S control, EXHIBITOR remains responsible for all charges for services and equipment provided up to and including the date of cancellation. FREEMAN will not issue refunds to EXHIBITOR of any payments made before the date of cancellation. It is EXHIBITOR'S responsibility to advise the FREEMAN Service Center Representative of problems with any orders, and to check the EXHIBITOR'S invoice for accuracy prior to the close of the Show or Event. If EXHIBITOR is exempt from payment of sales tax, FREEMAN requires an exemption certificate for the State in which the services are to be used. Resale certificates are not valid unless EXHIBITOR is rebilling these charges to its customers. For International EXHIBITORS, FREEMAN requires 100% prepayment of advance orders, and any order or services placed at show site must be paid at the show. For all others, should there be any pre-approved unpaid balance after the close of the show; terms will be net, due and payable in DALLAS, TEXAS upon receipt of invoice. Effective 30 days after invoice date, any unpaid balance will bear a FINANCE CHARGE at the lesser of the maximum rate allowed by applicable law, or 1.5% per month, which is an ANNUAL PERCENTAGE RATE of 18%, and future orders will be on a prepaid basis only. If any finance charge hereunder exceeds the maximum rate allowed by applicable law, the finance charge shall automatically be reduced to the maximum rate allowed, and any excess finance charge received by FREEMAN shall be either applied to reduce the principal unpaid balance or refunded to the payer. If past due invoices or invoice balances are placed with a collection agency or attorney for collection or suit, EXHIBITOR agrees to pay all legal and collection costs. THESE PAYMENT TERMS AND CONDITIONS SHALL BE GOVERNED BY AND CONSTRUED IN ACCORDANCE WITH THE LAWS OF THE STATE OF TEXAS. In the event of any dispute between the EXHIBITOR and FREEMAN relative to any loss, damage, or claim, such EXHIBITOR shall not be entitled to and shall not withhold payment, or any partial payment, due to FREEMAN for its services, as an offset against the amount of any alleged loss or damage. Any claims against FREEMAN shall be considered a separate transaction, and shall be resolved on its own merits. FREEMAN reserves the right to charge EXHIBITOR for the difference between the EXHIBITOR'S estimate of charges and the actual charges incurred by EXHIBITOR, or for any charges that FREEMAN may be obligated to pay on behalf of EXHIBITOR, including without limitation, any shipping charges. If EXHIBITOR provides a credit card for payment and charges are rejected by the EXHIBITOR'S credit card company for any reason, FREEMAN hereby provides notice that it reserves the right, and EXHIBITOR authorizes FREEMAN, to continue to attempt to secure payment through that credit card for as long as unpaid balances remain on the EXHIBITOR'S account.

LABOR UNDER THE SUPERVISION OF EXHIBITOR RESPONSIBILITIES:

EXHIBITOR shall be responsible for the performance of labor provided under this option. It is the responsibility of EXHIBITOR to supervise labor secured through FREEMAN in a reasonable manner as to prevent bodily injury and/or property damage and also to direct them to work in a manner that is in compliance with FREEMAN'S Safe Work Rules and/or Federal, State, County and Local ordinances, rules and/or regulations, including but not limited to Show or Facility Management rules and/or regulations. It is the responsibility of EXHIBITOR to check in with the Service Desk to pick up labor, and to return to the Service Desk to release labor when the work is completed.

INDEMNIFICATION:

EXHIBITOR agrees to indemnify, hold harmless, and defend FREEMAN from and against any and all demands, claims, causes of action, fines, penalties, damages, liabilities, judgments, and expenses (including but not limited to reasonable attorneys' fees and investigation costs) for bodily injury, including any injury to FREEMAN employees, and/or property damage arising out of work performed by labor provided by FREEMAN but supervised by EXHIBITOR. Further, the EXHIBITOR'S indemnification of FREEMAN includes any and all violations of Federal, State, County or Local ordinances, "Show Regulations and/or Rules" as published and/or set forth by Facility or Show Management, and/or directing labor provided by FREEMAN to work in a manner that violates any of the above rules, regulations, and/or ordinances.

IMPORTANT

PLEASE REFER TO FREEMAN'S "MATERIAL HANDLING TERMS & CONDITIONS" AS IT RELATES TO MATERIAL HANDLING SERVICES AND TO THE "SERVICE REQUEST & SHIPPING INSTRUCTIONS CONTRACT" AS IT RELATES TO TRANSPORTATION SERVICES. CONTRACT TERMS DEPEND ON THE NATURE OF SERVICES SECURED BY EXHIBITOR THROUGH FREEMAN. TERMS & CONDITIONS MAY VARY FOR EACH TYPE OF SERVICE ORDERED THROUGH FREEMAN.

MATERIAL HANDLING

YOU ARE ENTERING A CONTRACT WHICH LIMITS YOUR POSSIBLE RECOVERY IN CASE OF LOSS OR DAMAGE. Acceptance of said terms and conditions will be construed when any of the following conditions are met: This Material Handling Agreement (MHA) is signed; Exhibitor's materials are delivered to Freeman's warehouse or to an event site for which Freeman is the Official Show Contractor; or an order for labor and/or rental equipment is placed by Exhibitor with Freeman.

1. **DEFINITIONS.** For purposes of this Contract, Freeman means Freeman Decorating Services, Inc., and its employees, directors, officers, agents, assigns, affiliated companies, and related entities. The term "Exhibitor" means the Exhibitor, its employees, agents, representatives, any Exhibitor Appointed Contractors ("EAC"), and any persons receiving services from Freeman.

2. **PACKAGING/CRATES AND STORAGE.** Freeman shall not be responsible for damage to loose or uncrated materials, padwrapped or shrink-wrapped materials, glass breakage, concealed damage, carpets in bags or poly, or improperly packed or labeled materials. Freeman shall not be responsible for crates and packaging which are unsuitable for handling, in poor condition, or have prior damage. Crates and packaging should be of a design to adequately protect contents for handling by forklift and similar means. Freeman will not accept any crates or packaging containing hazardous materials. Goods requiring cold storage and those in accessible storage are stored at Exhibitor's own risk. **FREEMAN ASSUMES NO RESPONSIBILITY OR LIABILITY FOR LOSS OR DAMAGE TO GOODS IN COLD STORAGE OR ACCESSIBLE STORAGE.**

3. **EMPTY CONTAINERS.** Empty container labels will be available at the show site service desk. Affixing labels to the containers is the sole responsibility of Exhibitor or its representative. All previous labels must be removed or obliterated. Freeman assumes no responsibility for: error in the above procedures; removal of containers with old empty labels and without Freeman labels; or improper information on empty labels. **FREEMAN WILL NOT BE LIABLE FOR LOSS OR DAMAGE TO CRATES AND CONTAINERS OR THEIR CONTENTS WHILE SAME ARE IN EMPTY CONTAINER STORAGE.**

4. **INBOUND/OUTBOUND SHIPMENTS.** There may be a lapse of time between the delivery of shipment(s) to the booth and the arrival of Exhibitor, or a lapse of time between the completion of packing and the actual pickup of materials from the booths for loading onto a carrier and *during such times, Exhibitor materials will be left unattended.* **FREEMAN IS NOT RESPONSIBLE OR LIABLE FOR ANY LOSS, DAMAGE, THEFT, OR DISAPPEARANCE OF EXHIBITOR'S MATERIALS AFTER THEY HAVE BEEN DELIVERED TO EXHIBITOR'S BOOTH AT SHOW SITE OR BEFORE THEY HAVE BEEN PICKED UP FOR RELOADING AT THE CONCLUSION OF THE EVENT.** Freeman recommends the securing of security services from Facility or Show Management. All MHA's submitted to Freeman by Exhibitor will be checked at the time of pickup from the booth and corrections will be made where discrepancies exist between the quantities of items on any form submitted to Freeman and the actual count of such items in the booth at the time of pickup.

5. **DELIVERY TO THE CARRIER FOR RELOADING.** Freeman assumes no responsibility for loss, damage, theft, or disappearance of Exhibitor's materials after same have been delivered to Exhibitor's appointed carrier, shipper, or agent for transportation after the conclusion of the show. Freeman loads the materials onto the carrier under directions from the carrier or driver of that carrier. Any loading onto the carrier will be understood to be under the exclusive supervision and control of the carrier or driver of that carrier. **FREEMAN ASSUMES NO RESPONSIBILITY FOR LOSS, DAMAGE, THEFT OR DISAPPEARANCE OF EXHIBITOR'S MATERIALS THAT ARISES OUT OF IMPROPERLY LOADED OR LABELED MATERIALS.**

6. **DESIGNATED CARRIERS.** Freeman shall have the authority to change the Exhibitor designated carrier if that carrier does not pick up the shipment(s) at the appointed time. Where no disposition is made by Exhibitor, materials may be taken to a warehouse to await Exhibitor's shipping instructions and Exhibitor agrees to be responsible for charges relating to such rerouting and handling. In no event shall Freeman be responsible for any loss resulting from such rerouting designation.

7. **FORCE MAJEURE.** Freeman's performance hereunder is subject to, and Freeman shall not be responsible for loss, delay, or damage due to, strike, lockouts, work stoppages, natural elements, vandalism, Act of God, civil disturbances, power failures, explosions, acts of terrorism or war, or for any other cause beyond Freeman's reasonable control, nor for ordinary wear and tear in the handling of materials.

8. **CLAIM(S) FOR LOSS.** Exhibitor agrees that any and all claims for loss or damage must be submitted to Freeman immediately at the show site, and in any case not later than **thirty (30) business days** after the conclusion of the show or exposition. (For purposes of claim reporting, the "conclusion" of the show shall be construed as the time when Exhibitor's materials are delivered to the carrier for transportation from the show site or from Freeman's warehouse). All claims reported after thirty (30) days will be rejected. In no event shall a suit or action be brought against Freeman **more than two (2) years** after the date of loss or damage occurred.

a. **PAYMENT FOR SERVICES MAY NOT BE WITHHELD.** In the event of any dispute between the Exhibitor and Freeman relative to any loss, damage, or claim, Exhibitor shall not be entitled to and shall not withhold payment, or any partial payment, due Freeman for its services as an offset against the amount of any alleged loss or damage. Any claims against Freeman shall be considered a separate transaction and shall be resolved on their own merits.

b. **MAXIMUM RECOVERY.** If found liable for any loss, Freeman's sole and exclusive **MAXIMUM** liability for loss or damage to Exhibitor's materials and Exhibitor's sole and exclusive remedy is limited to \$.50 (USD) per pound per article with a maximum liability of \$100.00 (USD) per item, or \$1,500.00 (USD) per shipment whichever is less. All shipment weights are subject to correction and final charges determined by the actual or re-weighed weight of the shipment.

c. **LIMITATION OF LIABILITY.** IN NO EVENT SHALL FREEMAN BE LIABLE TO THE EXHIBITOR OR TO ANY OTHER PARTY FOR SPECIAL, COLLATERAL, EXEMPLARY, INDIRECT, INCIDENTAL, OR CONSEQUENTIAL DAMAGES, WHETHER SUCH DAMAGES OCCUR EITHER PRIOR OR SUBSEQUENT TO, OR ARE ALLEGED AS A RESULT OF, TORTIOUS CONDUCT, FAILURE OF THE EQUIPMENT OR SERVICES OF FREEMAN OR BREACH OF ANY OF THE PROVISIONS OF THIS CONTRACT, REGARDLESS OF THE FORM OF ACTION, WHETHER IN CONTRACT OR IN TORT, INCLUDING STRICT LIABILITY AND NEGLIGENCE, EVEN IF FREEMAN HAS BEEN ADVISED OR HAS NOTICE OF THE POSSIBILITY OF SUCH DAMAGES. SUCH EXCLUDED DAMAGES INCLUDE BUT ARE NOT LIMITED TO LOST PROFITS, LOSS OF USE, AND INTERRUPTION OF BUSINESS OR OTHER CONSEQUENTIAL OR INDIRECT ECONOMIC LOSSES.

9. **DECLARED VALUE.** Declarations of Declared Value are between the Exhibitor and the selected Carrier ONLY, and are in no way an extension of Freeman's maximum liability stated herein. Freeman will use commercially reasonable efforts to transmit the Declared Value instructions to the selected Carrier; however, **FREEMAN WILL NOT BE LIABLE FOR ANY CLAIM ARISING FROM THE TRANSMITTAL OF, OR FAILURE TO TRANSMIT, DECLARED VALUE INSTRUCTIONS TO THE CARRIER NOR FOR FAILURE OF THE CARRIER TO UPHOLD THE DECLARED VALUE OR ANY OTHER TERM OF CARRIAGE.**

10. **JURISDICTION / VENUE.** THIS CONTRACT SHALL BE CONSTRUED UNDER THE LAWS OF THE STATE OF TEXAS WITHOUT GIVING EFFECT TO ITS CONFLICT OF LAWS RULES. EXCLUSIVE VENUE FOR ALL DISPUTES ARISING OUT OF OR RELATING TO THIS CONTRACT SHALL RESIDE IN A COURT OF COMPETENT JURISDICITON IN DALLAS COUNTY, TEXAS.

11. **INDEMNIFICATION.** Exhibitor agrees to indemnify and forever hold harmless Freeman and its employees, directors, officers, and agents from and against any and all demands, claims, causes of action, fines, penalties, damages (including consequential), liabilities, judgments, and expenses (including but not limited to reasonable attorneys' fees and investigation costs) arising out or contributed to by Exhibitor's negligent supervision of any labor secured through Freeman; Exhibitor's negligence, willful misconduct, or deliberate act, or the negligence, willful misconduct, or deliberate act of Exhibitor's employees, agents, representatives, customers, invitees and/or any Exhibitor Appointed Contractors (EAC) at the show or exposition to which this Contract relates, including but not limited to the misuse, improper use, unauthorized alteration, or negligent handling of Freeman's equipment; Exhibitor's violation of Federal, State, County or Local ordinances; and/or Exhibitor's violation of Show Regulations and/or Rules as published and set forth by Facility and/or Show Management.

12. **LIEN.** Exhibitor grants Freeman a security interest in and a lien on all of Exhibitor's goods (including without limitation all equipment) that is from time to time in the possession of Freeman and all the proceeds thereof, including without limitation insurance proceeds (the "Collateral"), to secure the prompt and full payment and performance of all Exhibitor's indebtedness for monies paid, by Freeman on its behalf, services performed, materials and/or labor from time to time provided by Freeman to or for the benefit of Exhibitor ("Obligations"). Freeman shall have all the rights and remedies of a secured party under the Uniform Commercial Code, as may be amended from time to time ("UCC"), and any notice that Freeman is required to give under the UCC of a time and place of a public sale or the time after which any private sale or other intended disposition of any Collateral is to be made shall be deemed to constitute reasonable notice if such notice is mailed by registered or certified mail at least five (5) days prior to such action. Freeman may hold and not deliver any of the Collateral to Exhibitor for so long as there are any Obligations that remain unpaid or unsatisfied.

13. **WAIVER & RELEASE.** Exhibitor, as a material part of the consideration to Freeman for material handling services, waives and releases all claims against Freeman with respect to all matters for which Freeman has disclaimed liability pursuant to the provisions of this Contract.

14. **DRIVER LIABILITY WAIVER.** IN CONSIDERATION OF FREEMAN PERMITTING ENTRANCE TO THE PREMISES, YOU, YOUR EMPLOYER, THE OWNER OF THE TRUCK AND/OR EQUIPMENT THAT YOU ARE OPERATING (TRUCKOWNER) AND YOU AS AGENT OF YOUR EMPLOYER AND THE TRUCKOWNER, HEREBY ASSUME ALL RISK OF INJURY OR HARM TO YOURSELF AND OTHERS AND DAMAGE TO YOUR PROPERTY AND PROPERTY BELONGING TO YOUR EMPLOYER OR OTHERS ARISING FROM YOUR ACTIVITIES WHILE BEING PERMITTED TO ENTER THE PREMISES. YOU AGREE TO ENTER AT YOUR OWN RISK. YOU HAVE FULL KNOWLEDGE OF ANY RISK INVOLVED IN THIS ACTIVITY. YOU RECOGNIZE THE HAZARDS AND ARE AWARE OF ALL THE RULES FOR SAFE OPERATION. YOUR EMPLOYER, THE TRUCKOWNER, AND YOU AGREE TO INDEMNIFY AND HOLD HARMLESS FREEMAN, ITS EMPLOYEES, OFFICERS, DIRECTORS, AGENTS, ASSIGNS, AFFILIATED COMPANIES AND RELATED ENTITIES, AGAINST ANY AND ALL LIABILITY, ACTIONS, CLAIMS, AND DAMAGES OF ANY KIND WHATSOEVER ARISING FROM YOUR ACTIVITIES WHILE BEING PERMITTED TO ENTER THE PREMISE.

AIR CARGO SERVICE REQUEST AND SHIPPING INSTRUCTIONS CONTRACT

In tendering this shipment, the Shipper and Consignee agree to these TERMS which no agent or employee of the parties may alter. This Air Service Request and Shipping Instruction Contract is NON-NEGOTIABLE and has been prepared by Shipper, or if by Freeman or another on Shipper's behalf, it shall be deemed, conclusively, to have been prepared by the Shipper. The Shipper agrees that this shipment is subject to the TERMS stated herein ALL TERMS, including but not limited to, all the limitations of liability, shall apply to our agents and their contracting carriers.

1. DEFINITIONS: In this Contract, "Freeman" means Freeman Decorating Services, Inc., and its respective employees, officers, directors, agents, assigns, affiliated companies, and related entities including any contractors appointed by Freeman. The term "Shipper" means the person or business for whom the property is being transported, and includes their respective employees, officers, directors, agents, assigns, affiliated companies, and contractors appointed by the Shipper, excluding only Freeman. "Property" is all objects of any type received from the Shipper for transport by Freeman as described herein. "Consignee" is the party to whom Shipper has designated the goods are to be delivered.

2. FINAL CONTRACT BETWEEN THE PARTIES: In exchange for Shipper's payments and Freeman's services, which the parties have specified in this two-page Contract (including the Air Cargo Service Request and Shipping Instructions), Freeman and Shipper each agree that this Contract shall govern their respective rights and obligations regarding transportation of Shipper's property. This Contract shall take effect when the property first comes into the physical possession of Freeman, and the responsibility of Freeman under same shall end when the property has been placed in the possession of the Consignee or the Consignee's designated agent. If any part or provision of this Contract is found by a court of competent jurisdiction to be void or unenforceable, the remainder of the Contract shall continue in full force and effect.

3. Freeman's RESPONSIBILITIES UNDER THE CONTRACT ARE LIMITED: Freeman is responsible for the satisfactory performance of only those services which it directly provides under this Contract. Freeman shall not be responsible for the performance of individuals of firms who are not under the direct supervision or control of Freeman. Freeman shall not be responsible for events or causes of loss, delay, or damage beyond its reasonable control, including (by way of illustration only, and not as a limitation on the breadth of this clause), strike, lockout, work slowdown or stoppage, power failure, breakdown of plant or machinery, facility failure, vandalism, theft, Act of God, effect of natural elements, riot, civil commotion or disturbance, terrorism, act of war or belligerent parties, and any other cause or causes beyond the reasonable control of Freeman. EXCEPT FOR ELIGIBLE GUARANTEED SERVICE SHIPMENTS, Freeman DOES NOT GUARANTEE DELIVERY BY ANY SPECIFIC TIME OR DATE.

4. PACKAGING AND CRATES: Shipper's property must be well packaged for safe and secure handling, storage and shipment using ordinary care. Each piece must be legibly and durably marked with the name and address, including correct ZIP code of the Shipper and Consignee. When a container is used repetitively by Shipper, Shipper must remove all old labels, tags, markings, etc., and Shipper must ensure that the container retains adequate strength for transportation. Freeman makes neither representation nor any warranty regarding the acceptability or suitability of any packaging system or procedure that Shipper might use for its property. Freeman shall not be responsible for damage to loose or uncrated materials, padwrapped or shrink-wrapped materials, glass breakage, concealed damage, carpets in bags or poly, or improperly packed or labeled materials. Crates and packaging should be of a design to adequately protect contents for handling by forklift and similar means. General guidance as to acceptable packaging systems and procedures may be found in publications such as the National Motor Freight Classification, published by the National Motor Freight Traffic Association. For shipments of Perishable Commodities, U.S. and Canadian shipments must be packed to travel without spoilage for 72 hours from time of pickup; all international shipments must be packed to travel without spoilage for 24 hours beyond an agreed deadline. Freeman reserves the right to periodically embargo regions of the world due to conditions that may cause damage to perishable commodities.

5. REFUSED SHIPMENTS: If the Consignee refuses a shipment tendered for delivery or if Freeman is unable to deliver a shipment because of fault or mistake of the Consignor or Consignee, Freeman's liability shall then become that of a warehouseman.

(a) Freeman shall promptly attempt to provide notice, by telephonic, electronic or written communication as provided on the face of these shipping instructions, if so indicated, to Shipper or the party, if any, designated to receive notice in these instructions.

(b) Storage charges, based on Freeman's applicable rates, shall start no sooner than the next business day following the attempted notification. Storage may be, at Freeman's option, in any location that provides reasonable protection against loss or damage. Freeman may place the shipment in public storage at the owner's expense and without liability to Freeman.

(c) If Freeman does not receive disposition instructions within 48 hours of the time of Freeman's attempted first notification, Freeman will attempt to issue a second and final confirmed notification. Such notice shall advise that if Freeman does not receive disposition instructions within 10 days of that notification, Freeman may offer the shipment for sale at a public auction and Freeman has the right to offer the shipment for sale. The amount of sale will be applied to Freeman's invoice for transportation, storage and other lawful charges. Shipper will be responsible for the balance of charges not covered by the sale of the goods. If there is a balance remaining after all charges and expenses are paid, such balance will be paid to the owner of the property sold hereunder, upon claim and proof of ownership.

(d) Where Freeman has attempted to follow the procedure set forth above and the procedure is not possible, nothing shall be construed to abridge the right of Freeman, at its option, to sell the property under such circumstances and in such manner as may be authorized by law.

(e) When perishable goods cannot be delivered and disposition is not given within a reasonable time, Freeman may dispose of property to the best advantage. Where Freeman is directed by Consignee or Consignor to unload or deliver property at a particular location where Consignor, Consignee, or the Agent of either is not regularly located, Freeman's liability for the shipment shall terminate after unloading or delivery.

6. LIMITATION ON SHIPPER'S RECOVERABLE DAMAGES: Freeman's LIABILITY FOR DAMAGES ON DOMESTIC SHIPMENTS, INCLUDING BUT NOT LIMITED TO THOSE DAMAGES ARISING FROM OR RELATED TO MISDELIVERY, INCOMPLETE OR OTHERWISE INADEQUATE DELIVERY (INCLUDING BUT NOT LIMITED TO FAILURE TO FOLLOW SHIPPER OR CONSIGNEE INSTRUCTIONS OR FAILURE TO COLLECT OR PROPERLY DELIVER A PAYMENT INSTRUMENT), NONDELIVERY, MISSED PICKUP, AND LOSS OF OR DAMAGE TO CARGO, SHALL BE LIMITED TO THE HIGHER OF \$50.00 (USD) PER SHIPMENT OR \$.50 (USD) PER POUND (\$1.10 (USD) PER KILOGRAM) OF CARGO ADVERSELY AFFECTED THEREBY, PLUS TRANSPORTATION CHARGES APPLICABLE TO THAT PART OF THE SHIPMENT ADVERSELY AFFECTED THEREBY, UNLESS AT TIME OF SHIPMENT THE SHIPPER MAKES A DECLARATION OF VALUE FOR CARRIAGE IN THE SPACE DESIGNATED ON THE SERVICE REQUEST AND SHIPPING INSTRUCTIONS FORM AND PAYS THE APPROPRIATE VALUATION CHARGE. IN NO EVENT SHALL Freeman's LIABILITY EXCEED THE DECLARED VALUE OF THE SHIPMENT OR THE AMOUNT OF LOSS OR DAMAGE ACTUALLY SUSTAINED, WHICHEVER IS LOWER. IF CARRIAGE OF THE SHIPMENT IS SOLELY OR PARTLY BY AIR AND INVOLVES AN ULTIMATE DESTINATION OR A STOP IN A COUNTRY OTHER THAN THE COUNTRY OF DEPARTURE, Freeman's LIABILITY FOR CARGO LOST, DAMAGED OR DELAYED SHALL BE LIMITED TO \$9.07 PER POUND (\$20.00 PER KILOGRAM) FOR CARRIAGE SUBJECT TO THE UNAMENDED WARSAW CONVENTION OR THE WARSAW CONVENTION AS AMENDED BY THE HAGUE PROTOCOL OF 1955, 17 SPECIAL DRAWING RIGHTS PER KILOGRAM FOR CARRIAGE SUBJECT TO THE WARSAW CONVENTION AS AMENDED BY THE MONTREAL PROTOCOL NO. 4 OF 1975, OR \$9.07 PER POUND (\$20.00 PER KILOGRAM) FOR CARRIAGE WHERE THE WARSAW CONVENTION, INCLUDING ITS AMENDMENTS, DOES NOT APPLY FOR ANY REASON, UNLESS A HIGHER DECLARED VALUE IS REQUESTED, AND THE FEES SET FORTH IN THE SERVICE GUIDE FOR SUCH HIGHER DECLARED VALUE ARE PAID. FOR INTERNATIONAL SHIPMENTS, THIS SHIPPING REQUEST AND SHIPPING INSTRUCTION CONTRACT SHALL BE DEEMED AN AIR WAYBILL WITHIN THE MEANING OF THE WARSAW CONVENTION.

Notwithstanding the above limitations, domestic shipments containing the following items of extraordinary value are limited to a maximum declared value of \$500.00 (USD):
(a) artworks and objects of art, including without limitation original paintings, drawings, etchings, water colors, tapestries and sculpture;
(b) clocks, watches, jewelry (including costume jewelry), furs and fur-trimmed clothing;
(c) personal effects;
(d) and other inherently fragile or unique items, including prototypes, etc.

Any declared value in excess of the maximums allowed herein is null and void, and the acceptance by Freeman for carriage of any shipment with a declared value in excess of the allowed maximums does not constitute a waiver of these maximums. Shipper understands that even if Shipper is not able to participate or fully participate in a show due to loss of, theft of, or damage to its property, Freeman shall never be liable or responsible for damages identified by the terms (by way of example only and not in limitation of the breadth of this clause) such as the following: consequential damages, loss of use damages, loss of profits damages, business interruption damages, delay damages, special damages, collateral damages, exemplary damages, damages awarded for gross negligence, direct damages, indirect damages, damages for failure of performance, breach of contract damages, fraud damages, or any other sort of damage for tort or breach of contract. This limitation shall bind the parties

- (a) whenever or wherever the claimed loss or damage may occur;
- (b) even though the alleged loss or damage is claimed to result from negligence, strict liability, products liability, breach of contract, breach of statute or regulation, or any other legal theory or cause, and;
- (c) even though Freeman may have been advised or be on notice of the possibility or even the probability of such damages.

Freeman makes no warranties, express or implied, and expressly disclaims any and all warranties. Except for Freeman's failure to deliver in accordance with the Guaranteed Service section of the Service Guide, Freeman will not be liable for misdelivery, incomplete or otherwise inadequate delivery (including but not limited to failure to follow Shipper or Consignee instructions or failure to collect or properly deliver a payment instrument), non-delivery, missed pickup, delay on International shipments, loss or damage unless caused by Freeman's sole negligence.

7. SHIPPER'S RESPONSIBILITIES AND INDEMNIFICATION:

a) Shipper must pay in full for the services rendered under this Contract at the time the services are requested. The existence of a dispute between Shipper and Freeman relative to any claim or other matter shall have no bearing on this duty of payment. No claim submitted by or on behalf of Shipper will be processed unless Shipper's account is current.

b) Shipper understands and acknowledges that Freeman does not accept or transport illegal, dangerous or hazardous materials of any kind or nature. Shipper warrants and ensures that its property is inert, and contains no Hazardous Substances, Hazardous Materials, Chemicals, Gases, Explosives, Radioactive Materials, Biologically hazardous agents, or any other substance, matter or object in any form that could pose a threat to the health or safety of persons, property or the public welfare in general. Such goods may be warehoused at owner's risk and expense or destroyed without compensation.

c) Shipper shall defend and indemnify Freeman, its employees, directors, officers, and agents from and against any and all demands, claims, causes of action, fines, penalties, damages (including consequential), liabilities, judgments, and expenses (including but not limited to reasonable attorneys' fees and investigation costs) on account of personal injury, death, or damage to or loss of property or profits arising out of or contributed to by any of the following: Shipper's negligence, willful misconduct, or deliberate act; Shipper's violation of Federal, State, County or Local ordinances; Shipper's violation of Show Regulations and/or Rules as published and set forth by Facility and/or Show Management; and/or Shipper's failure to comply with (b) of this Agreement regarding the inclusion of any dangerous substances in the property placed with Freeman.

8. CLAIMS: Shipper, Consignee, or any other party claiming an interest in the shipment must notify Freeman immediately upon delivery, or in the case of loss or damage which could not have been noted at the time of delivery, within fourteen (14) days of delivery, of any loss or damage to the shipment. Receipt of the shipment by the Consignee or the Consignee's agent without written notice on the delivery receipt and/or delivery manifest will be prima facie evidence that the shipment was delivered in good condition. The amount of the claim may not be deducted from the transportation charges. Notice of loss or damage MUST be reported to Freeman at 800-995-3579. The shipment, its container(s), and packing material must be made available to Freeman for inspection at the delivery location. All shipments are subject to opening for inspection by Freeman; however, Freeman is not obligated to perform such inspection. All claims for loss or damage MUST be made in writing to Freeman within one hundred and twenty (120) calendar days after the date of acceptance of the shipment by Freeman. Please refer to the Service Guide for claim procedures. All claims for service failure must be made within thirty (30) calendar days from the date of shipment and Freeman's sole liability for such claims arising from Guaranteed Service shipments shall be limited to the transportation charges as provided in the Guaranteed Service section of the Service Guide. All claims for overcharge must be made in writing to Freeman within sixty (60) calendar days after the invoice date. No action for loss or damage may be maintained against Freeman unless (a) claimant complies with all requirements of this section and (b) for domestic shipments, if the claimant commences the action within one (1) year of the shipment by Freeman unless otherwise required by International, Federal or State Law. If the claim is for loss or damage involving International shipments, claimant must commence the action within two (2) years from the date of acceptance of the shipment by Freeman unless otherwise required by International, Federal or State Law. For purposes of this section, no action shall be deemed to have commenced until receipt by Freeman of service of process of the action on Freeman. Claims for loss or damage must be delivered to the following address: Cunningham Lindsey US, Inc., P.O. Box 703689, Dallas, TX 75370.

9. CHOICE OF FORUM: THIS CONTRACT SHALL BE CONSTRUED UNDER THE LAWS OF THE UNITED STATES (INCLUDING ADOPTED INTERNATIONAL CONVENTIONS) AND THE STATE OF TEXAS WITHOUT GIVING EFFECT TO THE STATE'S CONFLICT OF LAWS RULES. FREEMAN AND SHIPPER AGREE THAT ANY CLAIM OR DISPUTE OF ANY SORT ARISING OUT OF OR IN ANY WAY RELATED TO THIS CONTRACT, ITS PERFORMANCE OR NONPERFORMANCE, OR DAMAGES ALLEGEDLY RESULTING FROM SAME WILL BE ARBITRATED IN THE CITY OF DALLAS, TEXAS, AND THE RULES OF THE AMERICAN ARBITRATION ASSOCIATION WILL APPLY. IF BINDING ARBITRATION IS UNAVAILABLE TO RESOLVE ANY CONTROVERSY AND IT IS NECESSARY TO LITIGATE THE DISPUTE, THE DISPUTE SHALL BE LITIGATED IN A COURT OF COMPETENT JURISDICTION IN DALLAS COUNTY, TEXAS.

10. MISCELLANEOUS: Shipper warrants the accuracy of the weight and dimension data furnished in this Contract. Shipper understands that once its property is shipped by Freeman pursuant to the instructions contained in this Contract, Shipper has no right to control the shipment; stop the shipment in transit, or divert or reschedule same, and that Shipper will have no control over the property until it is delivered pursuant to the instructions in this Contract. Shipper agrees that this Contract may be provided to any third party, including common or contract carriers of cargo by air, water, rail, or road, for the purpose of confirming the right of Freeman to control the handling of the property and all matters related to payment for the shipment.

MOTOR CARGO

MOTOR CARGO SERVICE REQUEST AND SHIPPING INSTRUCTIONS CONTRACT

This Contract establishes your legal obligations with regard to the property described herein being shipped with Freeman Transportation. It specifically limits your rights and possible recovery if your property is lost or damaged. You must accept all terms and conditions of this Contract. You confirm that you have read and agree with all the terms and conditions of this Contract by receipt without contest. This Contract may not be waived or varied, except in writing, and then only by an authorized representative of Freeman.

1. **DEFINITIONS.** In this Contract, "Freeman" means Freeman Decorating Services, Inc., and its respective employees, officers, directors, agents, assigns, affiliated companies, and related entities including any contractors appointed by Freeman. The term "Shipper" means the person or business for whom the property is being transported, and includes their respective employees, officers, directors, agents, assigns, affiliated companies, and contractors appointed by the Shipper, excluding only Freeman. "Property" is all objects of any type received from the Shipper for transport by Freeman as described herein. "Consignee" is the party to whom Shipper has designated the goods are to be delivered.

2. **FINAL CONTRACT BETWEEN THE PARTIES.** In exchange for Shipper's payments and Freeman's services, which the parties have specified in this Contract, Freeman and Shipper each agree that this Contract shall govern their respective rights and obligations regarding transportation of Shipper's property. This Contract shall take effect when the property first comes into the physical possession of Freeman for inbound shipments and after loading on the applicable carrier for outbound shipments, and the responsibility of Freeman under same shall end when the property has been placed in the possession of the Consignee or the Consignee's designated agent. If any part or provision of this Contract is found by a court of competent jurisdiction to be void or unenforceable, the remainder of the Contract shall continue in full force and effect.

3. **FREEMAN'S RESPONSIBILITIES UNDER THE CONTRACT ARE LIMITED.** Freeman shall not be responsible for the performance of individuals or firms who are not under the direct supervision or control of Freeman. Freeman shall not be responsible for events or causes of loss, delay, or damage beyond its reasonable control, including (by way of illustration only, and not as a limitation on the breadth of this clause), strike, lockout, work slowdown or stoppage, power failure, breakdown of plant or machinery, facility failure, vandalism, theft, Act of God, effect of natural elements, riot, civil commotion or disturbance, terrorism, act of war or belligerent parties, and any other cause or causes beyond the reasonable control of Freeman. Freeman shall not be liable for delay caused by highway obstructions, or faulty or impassable highways, or lack of capacity of any highway, bridge, or ferry, or caused by breakdown or mechanical defects of vehicles or equipment, or from any cause other than the negligence of Freeman. Freeman shall not be bound to transport by any particular schedule, means, vehicle or otherwise, other than with reasonable dispatch.

4. **PACKAGING AND CRATES.** Shipper's property must be well packaged for safe and secure handling, storage and shipment using ordinary care. Freeman makes neither representation nor any warranty regarding the acceptability or suitability of any packaging system or procedure that Shipper might use for its property. Freeman shall not be responsible for damage to loose or uncrated materials, padwrapped or shrink-wrapped materials, glass breakage, concealed damage, carpets in bags or poly, or improperly packed or labeled materials. Crates and packaging should be of a design to adequately protect contents for handling by forklift and similar means. General guidance as to acceptable packaging systems and procedures may be found in publications such as the National Motor Freight Classification, published by the National Motor Freight Traffic Association.

5. **PERISHABLE GOODS.** Goods of a perishable nature are carried in dry trailers without environmental or atmospheric control or other special services unless Shipper states on the face of the "Service Request and Shipping Instructions" that the goods are to be carried in a refrigerated, heated, specially ventilated or otherwise specially equipped trailer. This carriage may be subject to additional charges. Shipper is responsible for bringing the goods to the proper temperature before loading the goods into the trailer, for the proper stowage of the goods within the trailer, and for setting the temperature (including maintenance and repair), during all times after the trailer is spotted by Freeman and before the trailer is received by Freeman. Freeman is not responsible for product deterioration caused by inherent vice, defects in the merchandise or transit times in excess of product shelf life. Refrigerated, heated, specially ventilated or otherwise specially equipped trailers are not equipped to change the temperature of goods (they are equipped only to maintain temperature). Shipper will give written notice of requested temperature setting of the thermostatic controls before receipt of the goods by Freeman. When a loaded trailer is received, Freeman will verify that the thermostatic controls are set to maintain trailer temperature as requested. Freeman is unable to determine whether the goods were at the proper temperature when they were loaded into the trailer or when the trailer is delivered to Freeman. Air temperature at the unit sensor will be maintained within a proper range of plus or minus 5 degrees Fahrenheit of the temperature requested by Shipper on the face of the "Service Request and Shipping Instructions" if the goods were at that temperature when loaded into the container and if the temperature controls were properly set when the container was loaded.

6. **REFUSED SHIPMENTS.** If the Consignee refuses a shipment tendered for delivery or if Freeman is unable to deliver a shipment because of fault or mistake of Freeman, Freeman's liability shall then become that of a warehouseman.

(a) Freeman shall promptly attempt to provide notice, by telephonic, electronic or written communication as provided on the face of these shipping instructions, if so indicated, to Shipper or the party, if any, designated in these instructions to receive notice.

(b) Storage charges, if applicable, shall start no sooner than the next business day following the attempted notification. Storage may be, at Freeman's option, in any location that provides reasonable protection against loss or damage. Freeman may place the shipment in public storage at the owner's expense and without liability to Freeman.

(c) If Freeman does not receive disposition instructions within 48 hours of the time of Freeman's attempted first notification, Freeman will attempt to issue a second and final confirmed notification. Such notice shall advise that if Freeman does not receive disposition instructions within 10 days of that notification, Freeman may offer the shipment for sale at a public auction and Freeman has the right to offer the shipment for sale. The amount of sale will be applied to Freeman's invoice for transportation, storage and other lawful charges. Shipper will be responsible for the balance of charges not covered by the sale of the goods. If there is a balance remaining after all charges and expenses are paid, such balance will be paid to the owner of the property sold hereunder, upon claim and proof of ownership.

(d) Where Freeman has attempted to follow the procedure set forth above and the procedure is not possible, nothing shall be construed to abridge the right of Freeman, at its option, to sell the property under such circumstances and in such manner as may be authorized by law.

(e) When perishable goods cannot be delivered and disposition is not given within a reasonable time, Freeman may dispose of property to the best advantage. When Freeman is directed by Consignee or Consignor to unload or deliver property at a particular location where Consignor, Consignee, or the Agent of either is not regularly located, Freeman's liability for the shipment shall terminate after unloading or delivery.

7. **INSURANCE. FREEMAN IS NOT AN INSURER.** Shipper is responsible for obtaining insurance for its property. Freeman provides no insurance for Shipper or its property.

8. **LIMITATION ON SHIPPER'S RECOVERABLE DAMAGES.** Shipper understands that even if Shipper's property is lost, stolen, or damaged, Freeman does not pay replacement or restoration cost of any property. **FREEMAN'S MAXIMUM LIABILITY SHALL BE THE AMOUNT OF PROVEN ACTUAL VALUE NOT EXCEEDING THE LOWER OF THE FAIR MARKET VALUE (THE "FAIR MARKET VALUE" EQUALS THE AS IS WHERE IS PRICE FOR THE PROPERTY AT THE LOCATION OF THE SHOW TO WHICH PRICE A WILLING BUYER AND A WILLING SELLER WOULD AGREE IN AN ORDINARY COURSE OF BUSINESS, ARM'S LENGTH SALE.) OR \$25.00**

(USD) PER POUND OF CARGO LOST OR DAMAGED UNLESS AT THE TIME OF SHIPMENT SHIPPER MAKES A DECLARATION OF VALUE FOR CARRIAGE IN THE SPACE DESIGNATED ON THE SHIPPING INSTRUCTIONS AND PAYS THE APPROPRIATE VALUATION CHARGE. Even if Shipper has made a declaration of value, liability shall never exceed the depreciated original invoice value or the fair market value of the property, whichever is less. The value per pound for applying declared valuation charges shall be determined by dividing Shipper's declared value for carriage by the actual weight of the shipment. In all cases not prohibited by law, where a lower value than the actual value of the said property has been stated in writing by Shipper or has been agreed upon in writing as the released value of the property upon which the rate is based, such lower value plus freight charges, if paid, shall be the maximum recoverable amount for loss or damage. **Notwithstanding the above limitations, all shipments containing the following items of extraordinary value are limited to a maximum declared value of \$500.00 (USD):** (a) Artworks and objects of art, including without limitation, original paintings, drawings, etchings, watercolors, tapestries and sculptures or prototypes; (b) Clocks, jewelry, including costume jewelry, furs, and fur-trimmed clothing; (c) Personal effects, including without limitation, papers and documents; or (d) Coin money, currency, gift certificates, debit cards, credit cards, and any other items of extraordinary value.

Any declared value in excess of the maximums allowed herein is null and void, and the acceptance by Freeman for carriage of any shipment with a declared value in excess of the allowed maximums does not constitute a waiver of these maximums. In any event, (excluding small package program shipments) **Freeman's MAXIMUM LIABILITY WILL NEVER BE MORE THAN \$100,000 PER SHIPMENT.** Shipper understands that even if Shipper is not able to participate or fully participate in a Show due to loss of, theft of, or damage to their property, Freeman shall not be liable or responsible for damages identified by the terms (by way of example only and not in limitation of the breadth of this clause) such as the following: consequential damages, loss of use damages, loss of profits damages, business interruption damages, delay damages, special damages, collateral damages, exemplary damages, damages awarded for gross negligence, direct damages, indirect damages, or damages for failure of performance, breach of contract damages, fraud damages, or any other sort of damage for tort or breach of contract. This limitation shall bind the parties: **(A) WHENEVER OR WHEREVER THE CLAIMED LOSS OR DAMAGE MAY OCCUR; (B) EVEN THOUGH THE ALLEGED LOSS OR DAMAGE IS CLAIMED TO RESULT FROM NEGLIGENCE, STRICT LIABILITY, PRODUCTS LIABILITY, BREACH OF CONTRACT, BREACH OF STATUTE OR REGULATION, OR ANY OTHER LEGAL THEORY OR CAUSE, AND; (C) EVEN THOUGH FREEMAN MAY HAVE BEEN ADVISED OR BE ON NOTICE OF THE POSSIBILITY OR EVEN THE PROBABILITY OF SUCH DAMAGES.**

9. **SHIPPER'S RESPONSIBILITIES AND INDEMNIFICATION:**(a) Shipper must pay in full for the services rendered under this Agreement at the time the services are requested. The existence of a dispute between Shipper and Freeman relative to any claim or other matter shall have no bearing on this duty of payment. No claim may be submitted by or on behalf of Shipper to Freeman unless Shipper's account is current.

(b) Shipper understands and acknowledges that Freeman does not accept or transport illegal or hazardous materials of any kind or nature. Shipper warrants and will ensure that its property is inert, and contains no Hazardous Substances, Hazardous Materials, Chemicals, Gasses, Explosives, Radioactive Materials, Biologically hazardous agents, or any other substance, matter or object in any form that could pose a threat to the health or safety of persons, property, or the public welfare in general. Such goods may be warehoused at owner's risk and expense or destroyed without compensation.

(c) Shipper shall defend and indemnify Freeman, its employees, directors, officers, and agents from and against any and all demands, claims, causes of action, fines, penalties, damages (including consequential), liabilities, judgments, and expenses (including but not limited to reasonable attorneys' fees and investigation costs) on account of personal injury, death, or damage to or loss of property or profits arising out of or contributed to by any of the following: Shipper's negligence, willful misconduct, or deliberate act; Shipper's violation of Federal, State, County or Local ordinances; Shipper's violation of Show Regulations and/or Rules as published and set forth by Facility and/or Show Management; and/or Shipper's failure to comply with subsection (b) of this section regarding the inclusion of any dangerous substances in the property placed with Freeman.

10. **CLAIMS.** Claims must be filed in writing within nine (9) months after the date of delivery of the property (or in the case of export traffic, within nine (9) months after delivery at the port of export), except that claims for failure to make delivery must be filed within nine (9) months after a reasonable time for delivery has elapsed. Suits for loss, damage, or delay shall be instituted against Freeman no later than two (2) years and one (1) day from the day when written notice is given by Freeman to the claimant that Freeman has disallowed the claim or any part or parts of the claim specified in the notice. Shipper shall deliver notice of claim for loss or damage by hand, U.S. mail, courier, facsimile, or electronic means to Cunningham Lindsey US, Inc., P.O. Box 703689, Dallas, TX 75370, as soon as loss or damage is discovered. The notice of claim shall invite a prompt joint survey of the damage, at a time and place to be agreed between the parties, and such survey shall go forward promptly. However, if in any case the property is received by the Consignee or the Consignee's agent without notice of loss or damage to property being served on Freeman within 15 calendar days of the receipt of the property, it is agreed between Freeman and Shipper that in that instance the presumption shall arise that the property was delivered in proper quantity and in good condition. Claims filed more than nine (9) months following the date on which the property was delivered or should have been delivered are agreed to be forever time barred.

11. **CHOICE OF FORUM / ARBITRATION.** THIS CONTRACT SHALL BE CONSTRUED UNDER THE LAWS OF THE STATE OF TEXAS WITHOUT GIVING EFFECT TO ITS CONFLICT OF LAWS RULES. EXCLUSIVE VENUE FOR ALL DISPUTES ARISING OUT OF CONTRACT, TORT, COMMON LAW OR RELATING TO THE ENFORCEMENT OR INTERPRETATION OF THIS CONTRACT SHALL RESIDE IN A COURT OF COMPETENT JURISDICTION IN DALLAS COUNTY, TEXAS. Notwithstanding anything herein to the contrary, any controversy or claim arising out of or relating to this Agreement, or the breach thereof, shall be exclusively settled by arbitration administered by the American Arbitration Association in accordance with its Commercial Arbitration Rules and judgment on the award rendered by the arbitrator(s) may be entered by any court having jurisdiction thereof.

12. **MISCELLANEOUS.** (a) Shipper warrants the accuracy of the weight and dimension data furnished in this Contract; (b) Shipper understands that once its property is shipped by Freeman pursuant to the instructions contained in this Contract, Shipper has no right to control the shipment, stop the shipment in transit, or divert or reschedule same. (c) Shipper agrees that this Contract may be provided to any third party, including common or contract carriers of cargo by air, water, rail, or road, for the purpose of confirming the right of Freeman to control the handling of the property and all matters related to payment for the shipment. Shipper agrees that all shipments are subject to correction and final charges determined by the actual or re-weighted weight of the shipment.

13. **SMALL PACKAGE PROGRAM.** If items shipped via Freeman's Small Packages program are lost, damaged or destroyed while in Freeman's possession, **FREEMAN'S MAXIMUM LIABILITY SHALL BE \$100 per package UNLESS AT THE TIME OF SHIPMENT SHIPPER MAKES A DECLARATION OF VALUE IN THE SPACE DESIGNATED ON THE SHIPPING INSTRUCTIONS AND PAYS THE APPROPRIATE VALUATION CHARGE.** If small packages are received by the Shipper and notice of loss or damage is not received by Freeman within 15 days of the delivery of the property, the parties agree that the presumption shall arise that the property was delivered in proper quantity and in good condition.

CREATIVE GREENERY



OF DALLAS

101C North Greenville Ave
 Ste 440, Allen, TX 75002
 Tel: 972-442-5592 Fax: 972-442-2530
 Email: Todd@dallasgreenery.com

Show name: _____

Show date: _____

Location: _____



Mums



Kalanchoes



Bromeliads

FLOWERING PLANTS

DESCRIBE	COLOR	PRE-PAID PRICE	CONVENTION PRICES	AMOUNT
MUMS	Yellow___ White___ Lavender___	\$20.00	\$23.00	
KALANCHOES	Yellow___ Pink___ Red___	\$20.00	\$23.00	
BROMELIAD	Red___ Pink___ Orange___	\$30.00	\$34.00	



Small Fern



Large Fern



Dracaena



Arborcolla



2-4' Ficus



6' Ficus



Palm

GREEN PLANTS

HEIGHT	TYPE	SPECIFY	PRE-PAID PRICE	CONVENTION PRICE	AMOUNT
SMALL	Ferns		\$20.00	\$24.00	
LARGE	Ferns		\$28.00	\$32.00	
2-3'	Palm, Arborcolla, Spath, Ficus	Circle Preference	\$38.00	\$42.00	
4'	Palm, Ficus, Dracaena	Circle Preference	\$48.00	\$52.00	
5'	Palm, Ficus	Circle Preference	\$58.00	\$62.00	
6'	Palm, Ficus	Circle Preference	\$68.00	\$72.00	
8'	Palm, Ficus	Circle Preference	\$72.00	\$76.00	

CONTAINER SELECTION

DESCRIPTION	SPECIFY	PRICE
White___ Black___ Wicker Baskets___	Circle Preference	Free
Glass Bubble Bowl		\$24.00



Spring



Tropical

FRESH FLORAL ARRANGEMENTS

DESCRIPTION	SPECIFY	PRE-PAID PRICE	CONVENTION PRICE	AMOUNT
Spring Floral Arrangements	Circle One: Round or One-Sided	\$60.00	\$66.00	
Exotic Tropical Floral Arrangements		\$70.00	\$76.00	

PAYMENT INFORMATION

Sub Total: _____ Sales Tax (7.25%): _____ Event Total: _____

Payment Enclosed: Check: ___ Visa ___ M/C ___ AMX ___

Credit Card No: _____ Exp Date: _____

Card Holder Name: _____

Signature: _____

COMPANY INFORMATION

Booth # _____

Company: _____ E-Mail: _____

Phone: _____ Fax: _____

Address: _____ City: _____

State: _____ Zip: _____ Booth Representative: _____

EXHIBIT HALL FIRE REGULATIONS
FORT WORTH FIRE DEPARTMENT
FIRE PREVENTION BUREAU
817-392-6830

The information contained in the brief outline does not by any means cover completely the ordinances and regulations contained in the "City of Fort Worth Fire Prevention Code". The following are basic rules governing concessions, exhibits and shows in any building open to the public.

1. All curtains, drapes and decorations must be constructed of flameproof material, or treated with an approved flameproof solution. (Treatment shall be renewed as often as may be necessary to maintain the flame-proofing effect.)
2. No combustible materials, merchandise or signs shall be attached to, hung from, or draped over flameproof side and rear divider draperies of booths, or attached to table skirting facing aisles, unless flame-proofed.
3. All exits, hallways and aisles leading from buildings or tents are to be kept clear and unobstructed at all times.
4. No exit door shall be locked, bolted or otherwise fastened or obstructed at any time.
5. All sawdust and shavings shall be kept damp at all times (except when used for animal bedding.)
6. All hay and straw shall be stored and maintained in a manner approved by the Fire Prevention Bureau.
7. The demonstration or use of equipment using liquid fuel in buildings is prohibited.
8. Automobiles, trucks, tractors, machinery and other motor vehicles utilizing flammable fuels which are placed on display inside any building shall have no more than two (2) gallons of fuel in the tank; all fuel tanks shall be locked or effectively sealed and battery cables shall be disconnected from the ignition system. Ignition keys for vehicles on display shall be kept by a responsible person at the display location for removal of such vehicles from the building in case of an emergency.
9. The use of liquefied petroleum gases inside buildings, tents or areas is strictly prohibited, except for demonstration by special permit.
10. "No Smoking by Order of Fire Chief" signs shall be posted and maintained in areas designated by the Fire Prevention Bureau.
11. Provide for daily removal and disposal of trash and rubbish from buildings, tents and areas.
12. All electrical wiring shall be installed in a manner approved by the City Electrical Engineer.
13. Provide and maintain approved fire extinguisher equipment in all areas.
14. All standpipe and hose cabinets shall be kept clear and unobstructed at all times.
15. All appliances fired by natural gas shall be approved by the City of Fort Worth Plumbing Inspector and Fire Prevention Bureau before used.
16. The use of welding and cutting equipment for demonstration purposes must be by permit from the Fire Prevention Bureau.
17. Cylinders of compressed gases are prohibited unless approved by the Fire Prevention Bureau and shall be secured in an upright position.
18. There shall be no obstruction blocking exit doors from the outside of any building, such as autos parked in doorways or barricades across sidewalks.
19. No curtains, drapes or decorations shall be hung in such a manner as to cover any exit signs and/or exit doors or exit ways.
20. No vehicles shall be parked in fire lanes outside of buildings.
21. No flammable liquids shall be admitted inside of buildings except by approval of the Fire Prevention Bureau.
22. Artificial lighting such as lanterns and candles are prohibited.
23. Where smoking is permitted, there shall be provided on each table and at other convenient places suitable noncombustible ashtrays or match receptacles.
24. Each exhibitor shall provide an approved metal container with metal cover for daily accumulation of waste material.
25. The use of all permanent gas-fired heating units shall meet the approval of the City Mechanical Division and the Fire Prevention Bureau. Liquid or gas-fired portable heaters are prohibited.
26. All cooking appliances shall be equipped with ventilating hoods and equipment as deemed necessary by the Fire Prevention Bureau, but in any instance such equipment shall be installed in accordance with the provisions of the City Building and Fire Codes.